

WAAS CH <b>97434</b> <b>W22A</b>	APP CRS <b>218°</b>	Rwy Ldg TDZE Apt Elev	<b>4204</b> <b>1378</b> <b>1379</b>
--	------------------------	-----------------------------	---

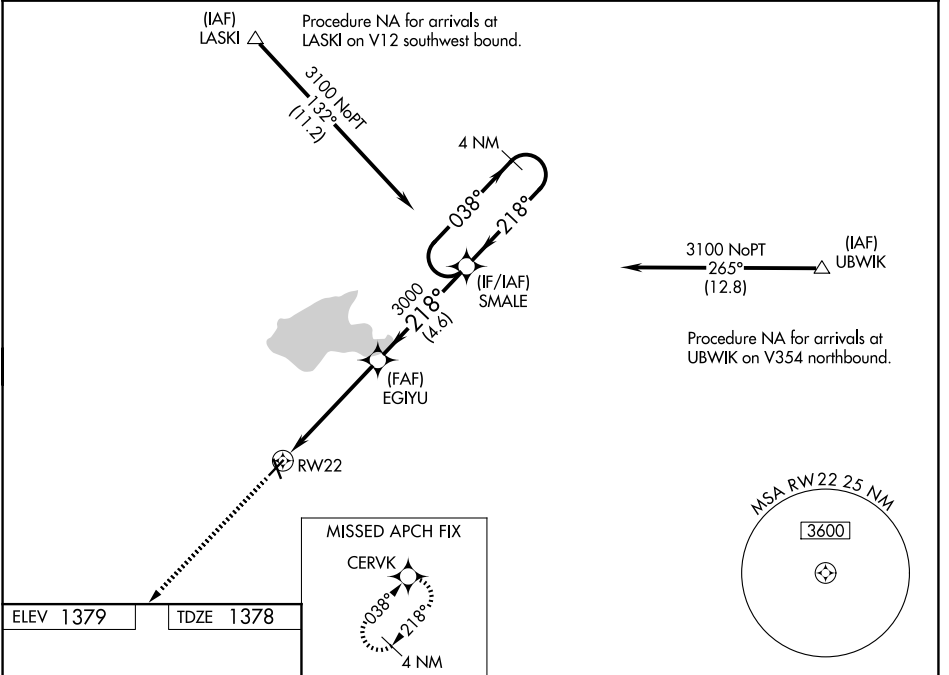
# RNAV (GPS) RWY 22

EL DORADO/CAPT JACK THOMAS MEML (EQA)

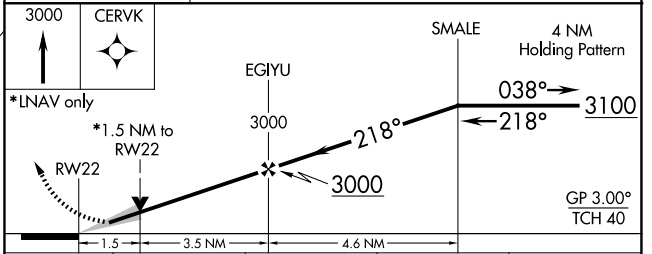
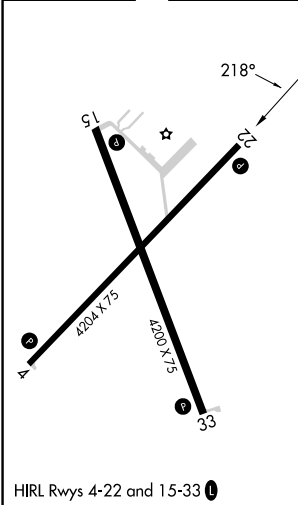
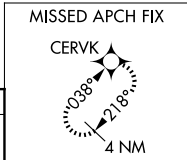
**⚠ NA** For uncompensated Baro-VNAV systems, LNAV/VNAV NA below -17°C (2°F) or above 54°C (130°F). DME/DME RNP-0.3 NA. When local altimeter setting not received, use Colonel James Jabara altimeter setting and increase all DA 51 feet and all MDA 60 feet; increase LNAV/VNAV all Cats visibility 1/8 mile. Baro-VNAV and VDP NA when using Colonel James Jabara altimeter setting.

**MISSED APPROACH:**  
Climb to 3000 direct CERVK and hold.

AWOS-3P <b>120.875</b>	WICHITA APP CON <b>134.8 269.1</b>	UNICOM <b>122.8 (CTAF) 0</b>
---------------------------	---------------------------------------	---------------------------------



ELEV 1379	TDZE 1378
-----------	-----------



CATEGORY	A	B	C	D
LPV DA	1578-1	200 (200-1)		NA
LNAV/VNAV DA	1671-1	293 (300-1)		NA
LNAV MDA	1900-1	522 (600-1)		NA
CIRCLING	1900-1 521 (600-1)	1960-1 581 (600-1)		NA

NC-2, 14 MAY 2026 to 11 JUN 2026

NC-2, 14 MAY 2026 to 11 JUN 2026