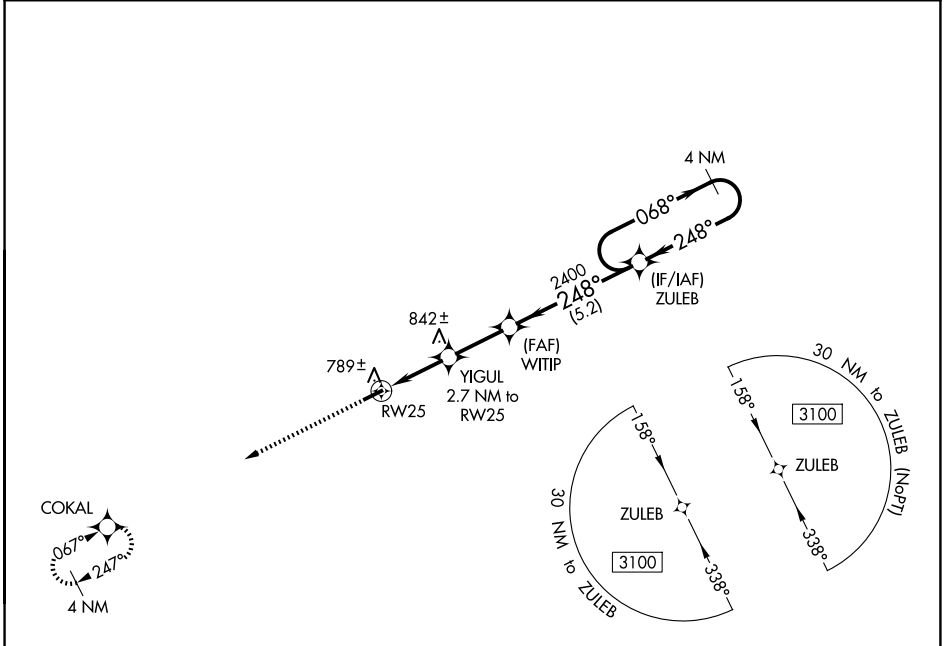


WAAS CH <b>90431</b> <b>W25A</b>	APP CRS <b>248°</b>	Rwy Ldg TDZE Apt Elev	<b>4500</b> <b>681</b> <b>692</b>
--	------------------------	-----------------------------	---

# RNAV (GPS) RWY 25

RUSSELLVILLE-LOGAN COUNTY (4M7)

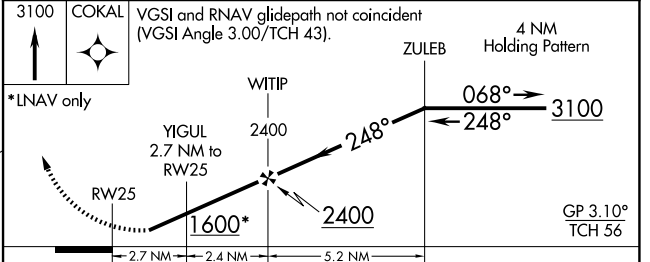
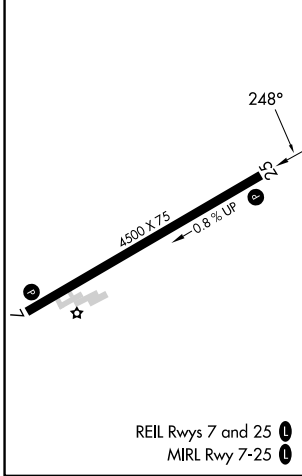
NA Baro-VNAV NA, DME/DME RNP-0.3 NA. Use Springfield altimeter setting. Rwy 25 helicopter visibility reduction below 1 SM NA. Straight-in Rwy 25 NA at night, Circling Rwy 25 NA at night.	MISSED APPROACH: Climb to 3100 direct COKAL and hold.	
	M91 AWOS-3 <b>120.675</b>	MEMPHIS CENTER <b>133.85 285.5</b>



SE-1, 14 MAY 2026 to 11 JUN 2026

SE-1, 14 MAY 2026 to 11 JUN 2026

ELEV 692	TDZE 681
----------	----------



3100	COKAL	VGSi and RNAV glidepath not coincident (VGSi Angle 3.00/TCH 43).		ZULEB	4 NM Holding Pattern
*LNAV only		WITIP	2400	068°	3100
		YIGUL	2400	248°	
		2.7 NM to RW25	2400	248°	
		1600*	2400		GP 3.10° TCH 56
		2.7 NM	2.4 NM	5.2 NM	
CATEGORY	A	B	C	D	
LPV DA	985-1		304 (300-1)		
LNAV/VNAV DA	1001-1½		320 (400-1½)		
LNAV MDA	1080-1	399 (400-1)	1080-1½	399 (400-1½)	
CIRCLING	1320-1	628 (700-1)	1320-1¾ 628 (700-1¾)	1520-2¾ 828 (900-2¾)	