

VOR/DME HYK <b>112.6</b> Chan <b>73</b>	APP CRS <b>161°</b>	Rwy Ldg TDZE Apt Elev	<b>5001</b> <b>978</b> <b>1003</b>
---	------------------------	-----------------------------	--

# VOR RWY 18

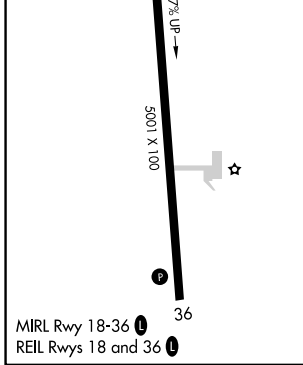
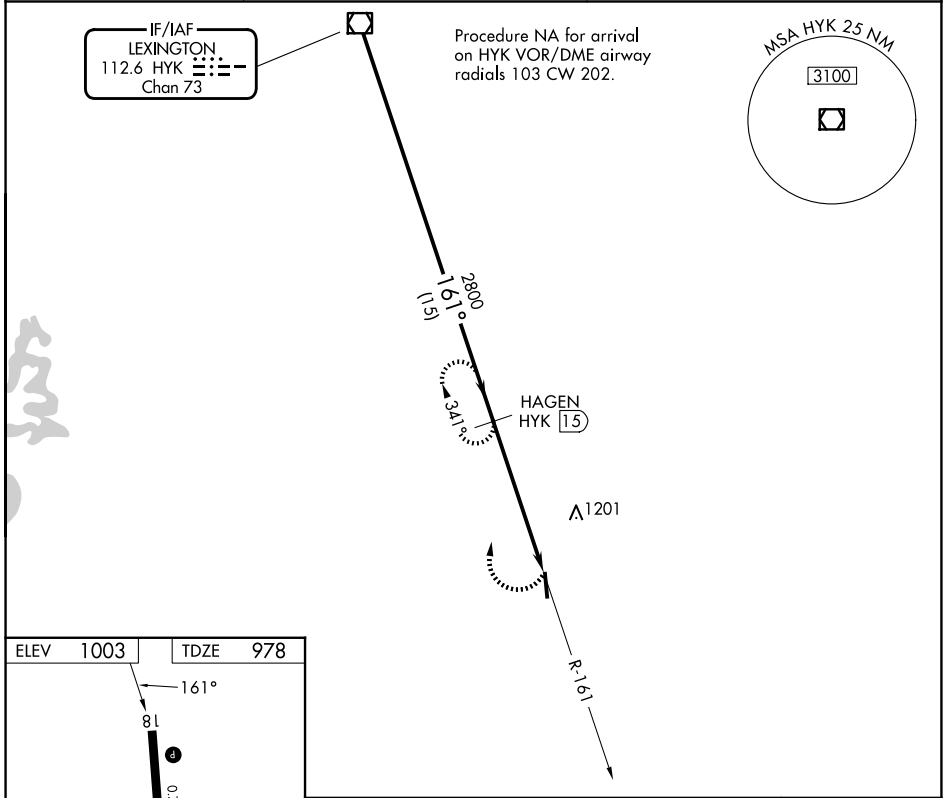
CENTRAL KENTUCKY RGNL (R.G.A)

DME required.

When local altimeter setting not received, use Lexington altimeter setting and increase all MDA 80 feet; increase S-18 Cats C and D visibility ¼ SM; Circling Cat C ½ SM and Circling Cat D ¼ SM.

MISSED APPROACH: Climbing right turn to 2800 on HYK VOR/DME airway R-161 to HAGEN/15 DME and hold.

AWOS-3 <b>119.625</b>	LEXINGTON APP CON <b>120.15 259.3</b>	UNICOM <b>122.725 (CTAF) 0</b>
--------------------------	--	-----------------------------------



	HYK VOR/DME		HAGEN HYK 15		HAGEN HYK 15	
	2800		2800		HYK 20.7	
	161°		2.95°		TCH 40	
	15 NM		5.7 NM			
CATEGORY	A	B	C	D		
S-18	1460-1	482 (500-1)	1460-1⅓	482 (500-1⅓)		
CIRCLING	1460-1 457 (500-1)	1520-1 517 (600-1)	1520-1½ 517 (600-1½)	1780-2½ 777 (800-2½)		

SE-1, 14 MAY 2026 to 11 JUN 2026

SE-1, 14 MAY 2026 to 11 JUN 2026