

# RNAV (GPS) RWY 16

ANSON COUNTY/JEFF CLOUD FLD (A/F P)

APP CRS	Rwy Idg	<b>5498</b>
<b>162°</b>	TDZE	<b>300</b>
	Apt Elev	<b>300</b>

RNP APCH - GPS.

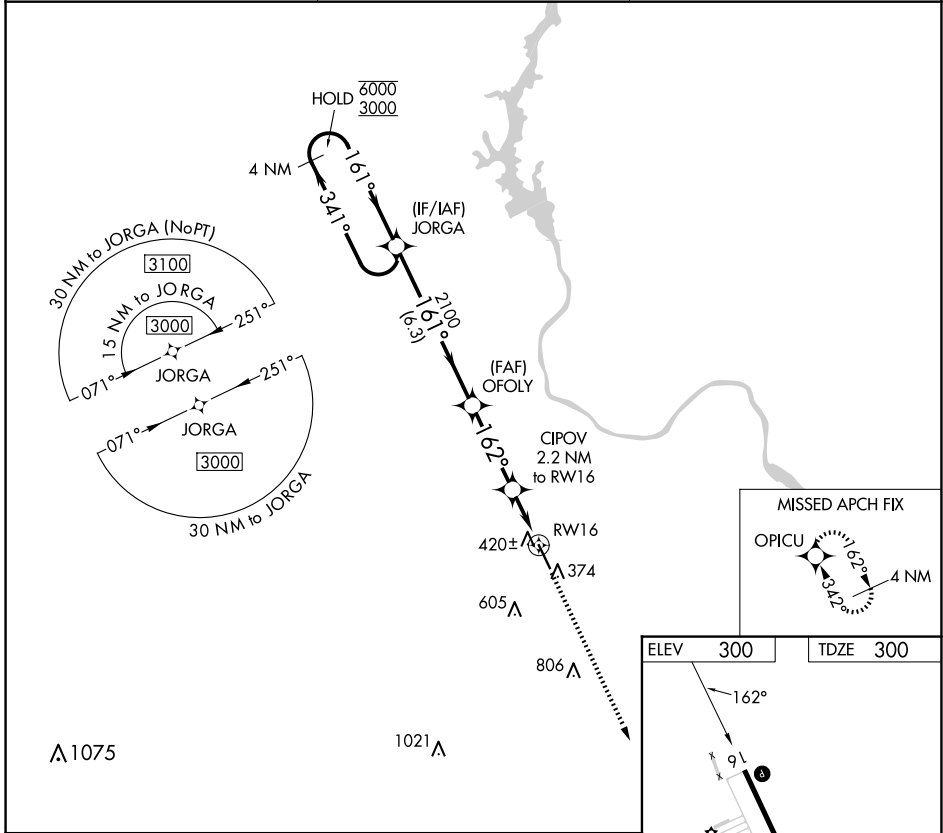
**▼** Procedure NA at night.  
**▲** Rwy 16 helicopter visibility reduction below 1 SM NA.

MISSED APPROACH: Climb to 3000 direct OPICU and hold.

AWOS-3  
**119.325**

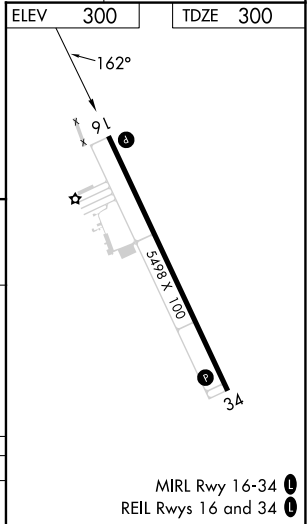
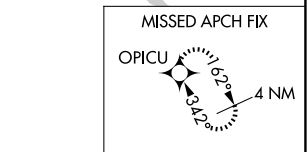
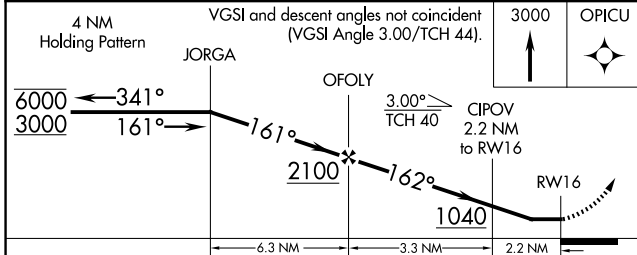
CHARLOTTE APP CON  
**120.05 307.8**

UNICOM  
**122.8 (CTAF) 0**



SE-2, 14 MAY 2026 to 11 JUN 2026

SE-2, 14 MAY 2026 to 11 JUN 2026



CATEGORY	A	B	C	D
LNAV MDA		680-1	380 (400-1)	

MIRL Rwy 16-34 **0**  
 REIL Rws 16 and 34 **0**