

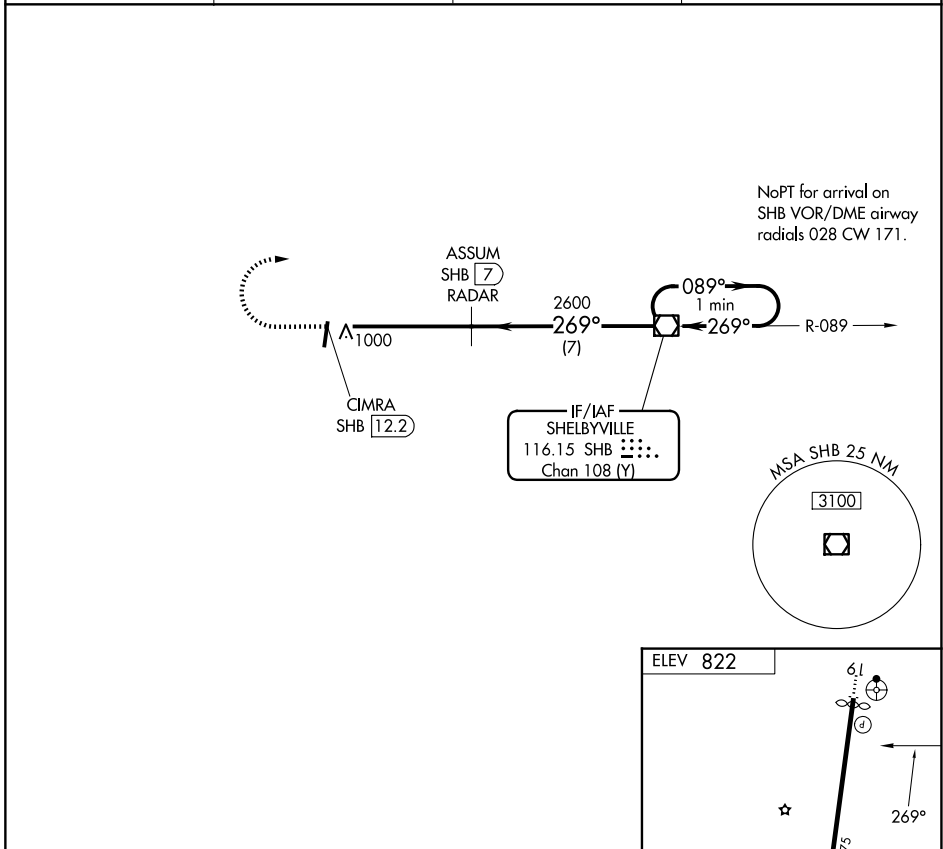
VOR/DME SHB <b>116.15</b> Chan <b>108 (Y)</b>	APP CRS <b>269°</b>	Rwy Ldg TDZE Apt Elev <b>N/A</b> <b>N/A</b> <b>822</b>
---	------------------------	--

**VOR-A**  
INDY SOUTH GREENWOOD (HFY)

**▼** Rwy 1, 19 helicopter visibility reduction below 3/4 SM NA. DME or RADAR REQUIRED.

MISSED APPROACH: Climb to 1400 then climbing right turn to 2600 direct SHB VOR/DME and hold.

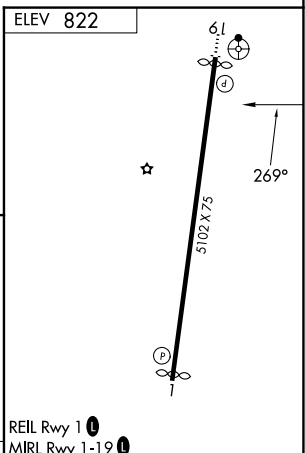
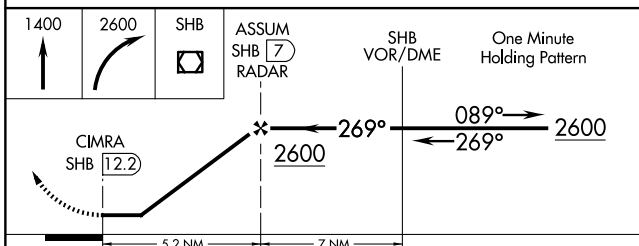
AWOS-3P <b>118.525</b>	INDIANAPOLIS APP CON <b>124.95 317.8</b>	GCO <b>121.725</b>	UNICOM <b>123.0 (CTAF) 0</b>
---------------------------	---	-----------------------	---------------------------------



NoPT for arrival on SHB VOR/DME airway radials 028 CW 171.

EC-2, 14 MAY 2026 to 11 JUN 2026

EC-2, 14 MAY 2026 to 11 JUN 2026



CATEGORY	A	B	C	D	FAF to MAP 5.2 NM					
CIRCLING	1360-1 538 (600-1)	1380-1 558 (600-1)	1380-1½ 558 (600-1½)	NA	Knots	60	90	120	150	180
					Min:Sec	5:12	3:28	2:36	2:05	1:44