

| | | |
|-------------|----------|-------------|
| APP CRS | Rwy Ldg | 2758 |
| 071° | TDZE | 193 |
| | Apt Elev | 193 |

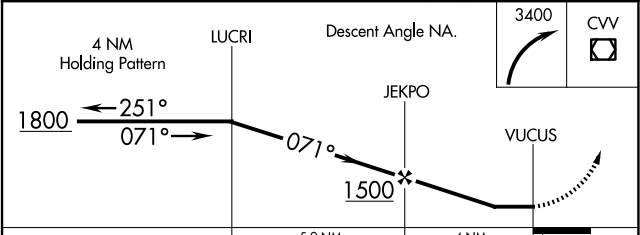
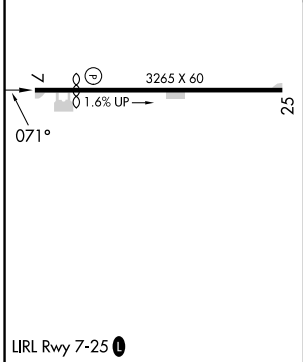
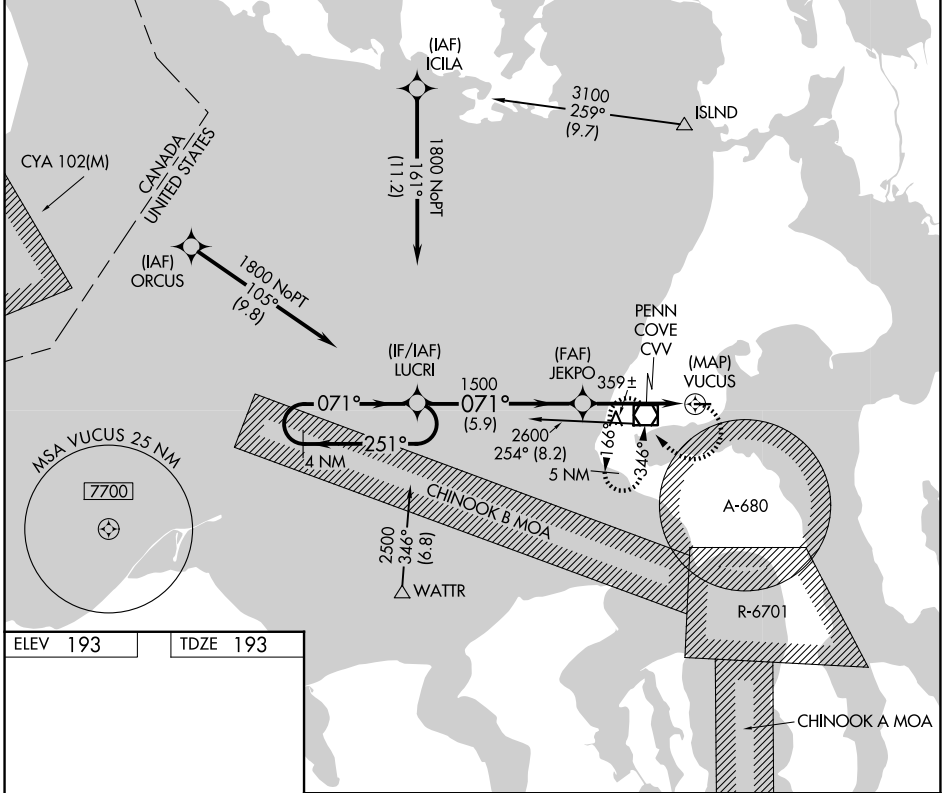
RNAV (GPS) RWY 7

DELAURENTIS (OKH)

▼ DME/DME RNP- 0.3 NA. Helicopter visibility reduction below 3/4 SM NA. Circling north of Rwy 7-25 NA at night.
▲ When local altimeter setting not received, use Whidbey Island NAS (Ault Flt) altimeter setting and increase all MDAs 40 feet. Night landing: Rwy 25 NA.

MISSED APPROACH: Climbing right turn to 3400 direct CVV VOR/DME and hold, continue climb-in-hold to 3400.

| | | |
|--------------------------|--|---------------------------------|
| AWOS-3 132.775 | WHIDBEY APP CON 118.2 285.65 | UNICOM 122.8 (CTAF) 0 |
|--------------------------|--|---------------------------------|



| CATEGORY | A | B | C | D |
|-----------|-------------|-------------|----|---|
| LNNAV MDA | 620-1 | 427 (500-1) | NA | |
| CIRCLING | 620-1 | 660-1 | NA | |
| | 427 (500-1) | 467 (500-1) | | |

NW-1, 14 MAY 2026 to 11 JUN 2026

NW-1, 14 MAY 2026 to 11 JUN 2026