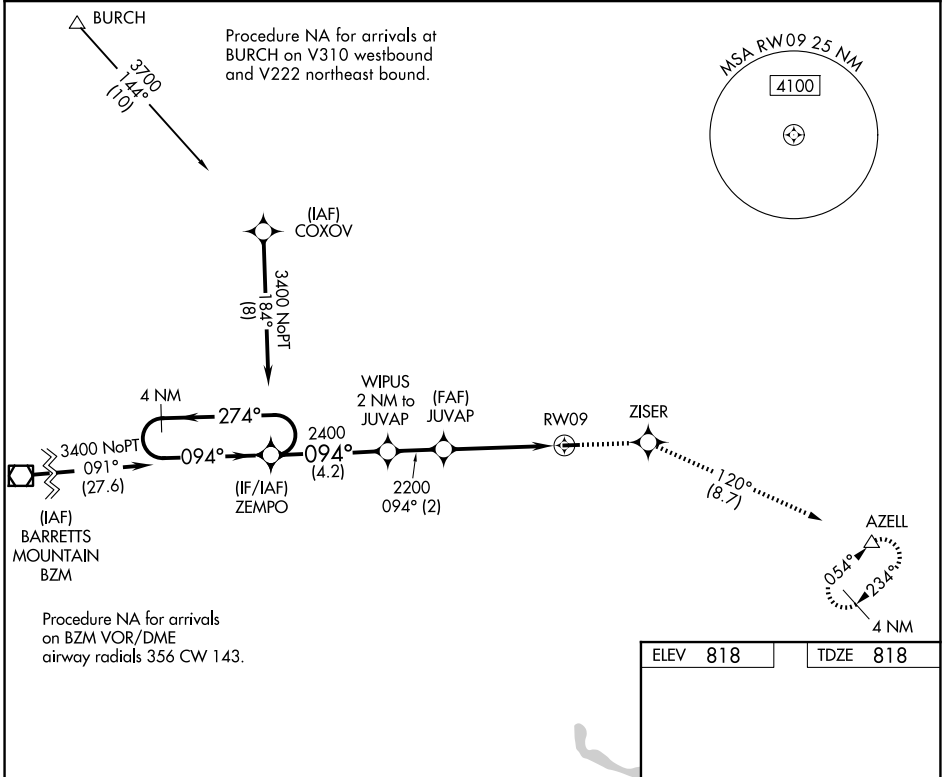


APP CRS	Rwy Ldg	2943
094°	TDZE	818
	Apt Elev	818

RNAV (GPS) RWY 9

TWIN LAKES (8A7)

RNP APCH.		MISSED APPROACH: Climb to 3000 direct ZISER and on track 120° to AZELL and hold.
<p>▽ Use Davidson County Exec altimeter setting; when not received, use Smith Reynolds altimeter setting and increase all MDA 40 feet. Procedure NA at night. Rwy 9 helicopter visibility reduction below 1 SM NA.</p> <p>▲ NA</p>		
EXX AWOS-3 119.825	GREENSBORO APP CON 124.35 269.225	UNICOM 122.7 (CTAF)



SE-2, 14 MAY 2026 to 11 JUN 2026

SE-2, 14 MAY 2026 to 11 JUN 2026

ELEV	818	TDZE	818
CATEGORY	A	B	C
LNVA MDA	1320-1	502 (600-1)	NA
CIRCLING	1380-1 562 (600-1)	1400-1 582 (600-1)	NA
IIRL Rwy 9-27			

