

WAAS CH <b>97444</b> <b>W24A</b>	APP CRS <b>237°</b>	Rwy Ldg TDZE Apt Elev	<b>5400</b> <b>631</b> <b>631</b>
--	------------------------	-----------------------------	---

# RNAV (GPS) RWY 24

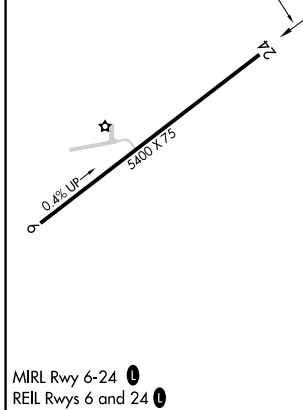
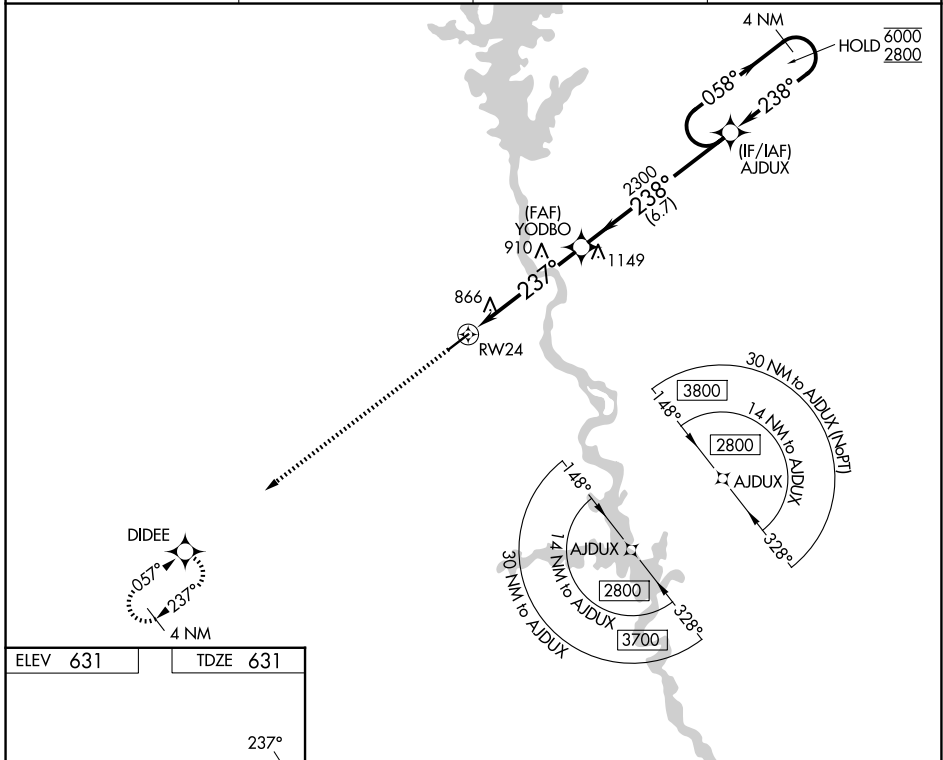
LANETT RGNL (7A.3)

RNP APCH - GPS.

**▼** Rwy 24 helicopter visibility reduction below 1 SM NA. Use LGC altimeter setting.  
**▲ NA** Straight-in Rwy 24 NA at night, Circling Rwy 24 NA at night.

MISSED APPROACH: Climb to 2900 direct DIDEE and hold.

LGC AWOS-3 <b>126.325</b>	ATLANTA CENTER <b>120.45 298.85</b>	ATLANTA APP CON * <b>125.5 323.1</b>	UNICOM <b>122.8</b> (CTAF) <b>①</b>
------------------------------	--	---	--



ELEV 631	TDZE 631	Visual Segment - Obstacles.	
2900	DIDEE	AJDUX	4 NM Holding Pattern
↑	✦	← 238° → 6000	← 238° → 2800
RWY 24		YODBO	
5.1 NM		6.7 NM	
CATEGORY	A	B	C
LP MDA	1160-1	529 (600-1)	1160-1½ 529 (600-1½)
LNAV MDA	1340-1	709 (800-1)	1340-2 709 (800-2)
CIRCLING	1340-1	709 (800-1)	1620-3 989 (1000-3)

LANETT, ALABAMA  
Amdt 1 22JAN26

32°49'N-85°14'W

# RNAV (GPS) RWY 24

SE-4, 14 MAY 2026 to 11 JUN 2026

SE-4, 14 MAY 2026 to 11 JUN 2026