

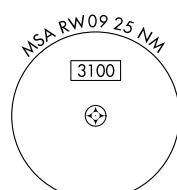
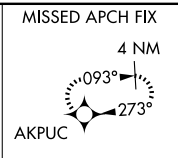
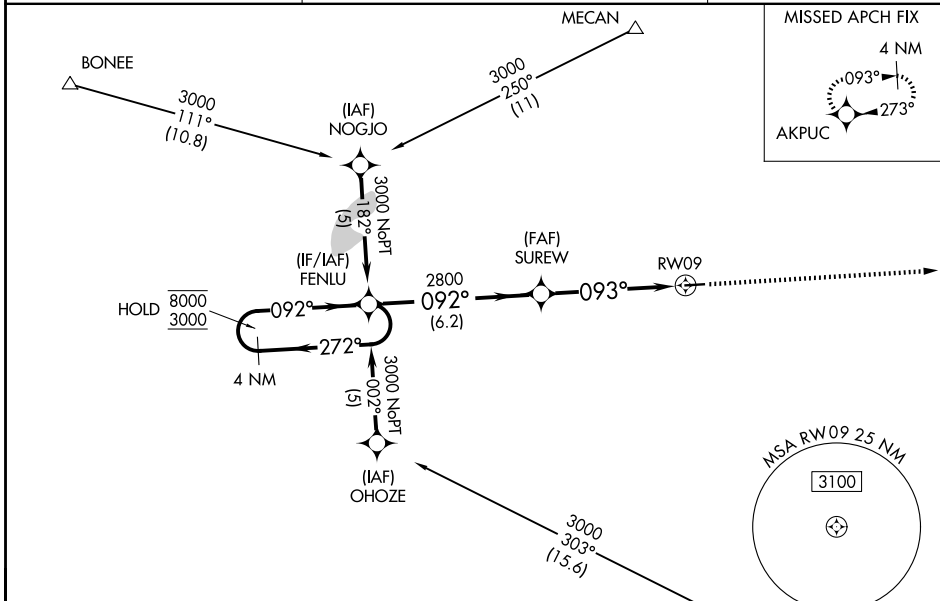
WAAS CH 53409 W09A	APP CRS 093°	Rwy Ldg TDZE 1082 Apt Elev 1082
--	------------------------	---

RNAV (GPS) RWY 9

MADISON COUNTY (UYF)

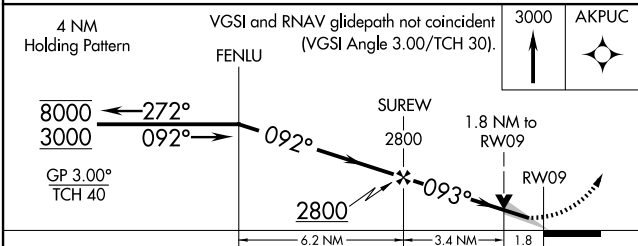
RNP APCH - GPS.		MISSED APPROACH: Climb to 3000 direct AKPUC and hold.
<p>▼ ▲ For uncompensated Baro-VNAV systems, LNAV/VNAV NA below -17°C or above 54°C.</p>		

AWOS-3PT 120.85	COLUMBUS APP CON 134.0 279.6	UNICOM 123.0 (CTAF) 0
---------------------------	--	---------------------------------



ELEV 1082	TDZE 1082
-----------	-----------

Profile view showing a 0.8% UP slope. Dimensions: 4000 x 75. Altitudes: 3000, 8000. Slope: 0.8% UP.



CATEGORY	A	B	C	D
LPV DA		1332-1	250 (300-1)	
LNAV/VNAV DA		1548-1¾ 466 (500-1¾)		
LNAV MDA	1680-1	598 (600-1)	1680-1¾	598 (600-1¾)
CIRCLING	1680-1	598 (600-1)	1680-1¾ 598 (600-1¾)	1840-2½ 758 (800-2½)

REIL Rwy 9 and 27
MIRL Rwy 9-27

EC-2, 14 MAY 2026 to 11 JUN 2026

EC-2, 14 MAY 2026 to 11 JUN 2026