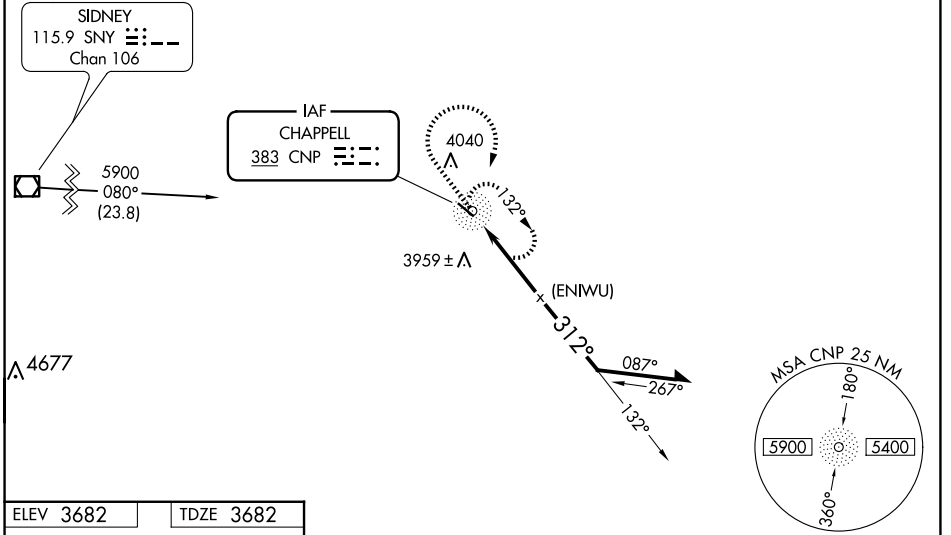


| | | | |
|-----------------------|------------------------|-----------------------------|---|
| NDB CNP 383 | APP CRS 312° | Rwy Idg TDZE Apt Elev | 3870 3682 3682 |
|-----------------------|------------------------|-----------------------------|---|

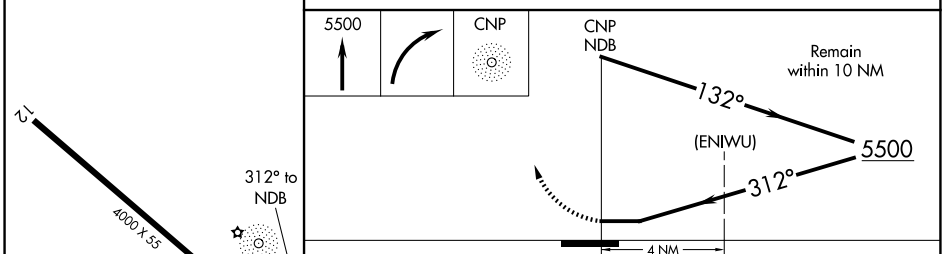
NDB or GPS RWY 30

BILLY G RAY FLD (CNP)

| | |
|---|--|
| <p>NA</p> <p>Use Sidney altimeter setting, if not received, use Scottsbluff altimeter setting.</p> | <p>MISSED APPROACH: Climb to 5500 then right turn direct CNP NDB and hold.</p> |
| <p>DENVER CENTER</p> <p>118.475 225.4</p> | <p>CTAF</p> <p>122.9</p> |



| | |
|-----------|-----------|
| ELEV 3682 | TDZE 3682 |
|-----------|-----------|



| CATEGORY | A | B | C | D |
|--|--------------------------|--------------------------|-------------------------|-------------------------|
| S-30 | 4460-1 778 (800-1) | 4460-1¼ 778 (800-1¼) | 4460-2¼ 778 (800-2¼) | 4460-2½ 778 (800-2½) |
| CIRCLING | 4540-1 858 (900-1) | 4540-1¼ 858 (900-1¼) | 4540-2½ 858 (900-2½) | 4600-3 918 (1000-3) |
| SCOTTSBLUFF ALTIMETER SETTING MINIMUMS | | | | |
| S-30 | 4520-1 838 (900-1) | 4520-1¼ 838 (900-1¼) | 4520-2½ 838 (900-2½) | 4520-2¾ 838 (900-2¾) |
| CIRCLING | 4600-1¼ 918 (1000-1¼) | 4600-2¾ 918 (1000-2¾) | 4680-3 998 (1000-3) | |

MIRL Rwy 12-30

CHAPPELL, NEBRASKA
Amdt 2C 25MAR21

41°05'N-102°28'W

NDB or GPS RWY 30

BILLY G RAY FLD (CNP)

NC-2, 14 MAY 2026 to 11 JUN 2026

NC-2, 14 MAY 2026 to 11 JUN 2026