

| | | | |
|--|------------------------|-----------------------------|---|
| WAAS CH 77741 W17A | APP CRS 175° | Rwy Ldg TDZE Apt Elev | 4020 1468 1468 |
|--|------------------------|-----------------------------|---|

RNAV (GPS) RWY 17

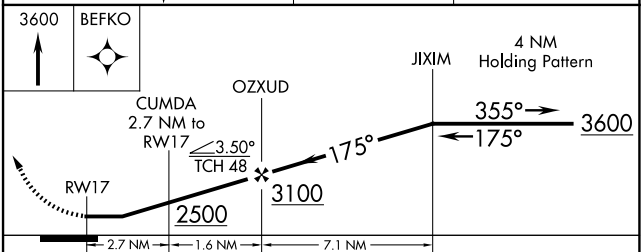
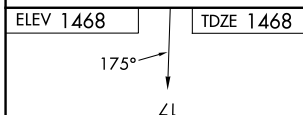
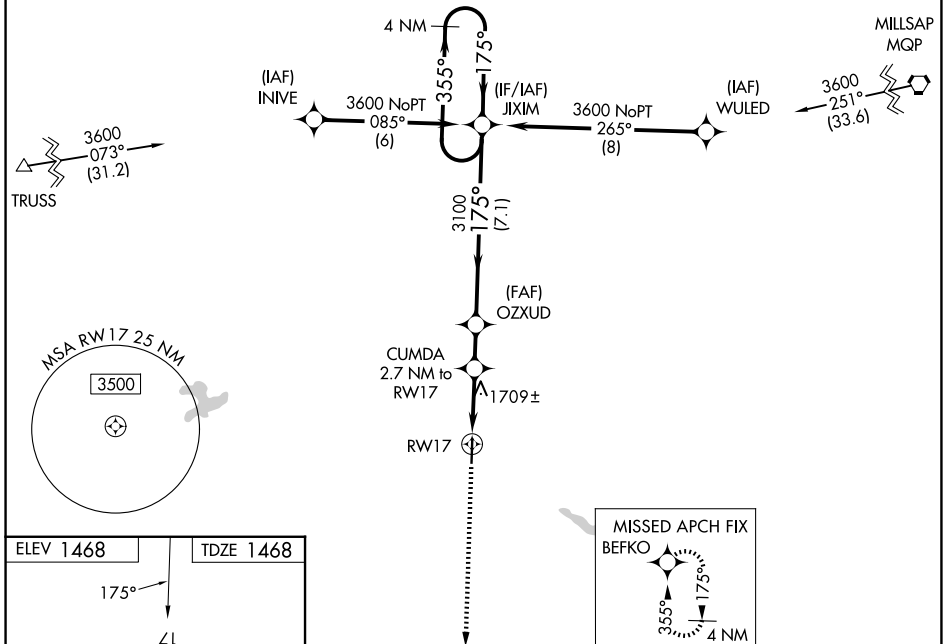
EASTLAND MUNI (ETN)

⚠ Helicopter visibility reduction below 1 SM NA. DME/DME RNP-0.3 NA. When local altimeter setting not received, use Breckenridge altimeter setting: increase all MDAs 80 feet; increase LP and LNAV visibility Cat C ¼ SM and Circling visibility Cat C ¼ SM. Straight-in Rwy 17 NA at night, Circling Rwy 17 NA at night.

MISSSED APPROACH: Climb to 3600 direct BEFKO and hold.

| | | |
|---------------------------|--|---------------------------------|
| AWOS-3PT 118.45 | FORT WORTH CENTER 135.375 354.05 | UNICOM 122.8 (CTAF) 0 |
|---------------------------|--|---------------------------------|

Procedure NA for arrival on MQP VORTAC
airway radials 161 CW 330.



| CATEGORY | A | B | C | D |
|----------|-----------------------|-------------------------------|-------------------------------|----|
| LP MDA | 2040-1 | 572 (600-1) | 2040-1 5/8 572 (600-1 5/8) | NA |
| LNAV MDA | 2040-1 | 572 (600-1) | 2040-1 5/8 572 (600-1 5/8) | NA |
| CIRCLING | 2120-1 652 (700-1) | 2320-1 1/4 852 (900-1 1/4) | 2320-2 1/2 852 (900-2 1/2) | NA |

MIRL Rwy 17-35 0

SC-2, 14 MAY 2026 to 11 JUN 2026

SC-2, 14 MAY 2026 to 11 JUN 2026