

WAAS CH 78233 W03A	APP CRS 039°	Rwy Ldg TDZE Apt Elev	4000 961 963
--	------------------------	-----------------------------	---

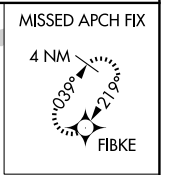
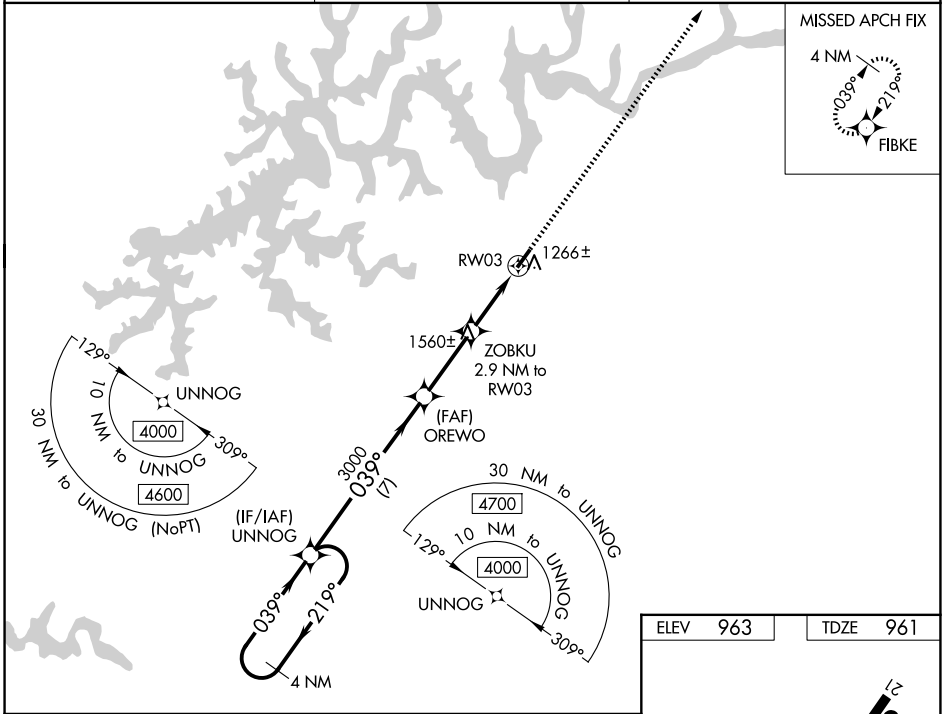
RNAV (GPS) RWY 3

WAYNE COUNTY (EKG)

⚠ Baro-VNAV NA when using Somerset altimeter setting. For uncompensated Baro-VNAV systems, LNAV/VNAV NA below -1.6°C (4°F) or above 54°C (130°F). DME/DME RNP-0.3 NA. Helicopter visibility reduction below 1 SM NA. When local altimeter setting not received, use Somerset altimeter setting and increase all DA 44 feet and all MDA 60 feet and increase LNAV/VNAV all Cats visibility ¼ mile. Rwy 3 Straight-in and Circling minimums NA at night.

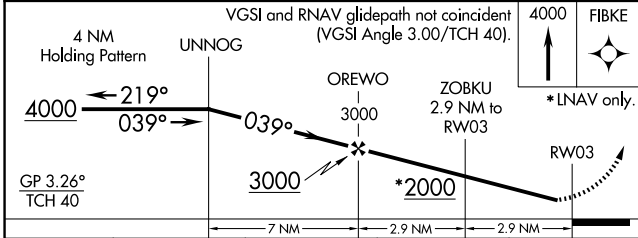
MISSED APPROACH: Climb to 4000 direct FIBKE and hold.

AWOS-3PT 118.825	INDIANAPOLIS CENTER 124.625 371.925	UNICOM 122.8 (CTAF) ①
----------------------------	---	--

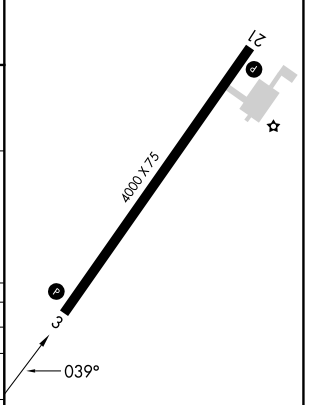


SE-1, 14 MAY 2026 to 11 JUN 2026

SE-1, 14 MAY 2026 to 11 JUN 2026



ELEV	963	TDZE	961
------	-----	------	-----



CATEGORY	A	B	C	D
LPV DA	1233-1	272 (300-1)		NA
LNAV/VNAV DA	1410-1 3/8	449 (500-1 3/8)		NA
LNAV MDA	1520-1	559 (600-1)		NA
CIRCLING	1780-1 1/4 817 (900-1 1/4)	1840-1 1/4 877 (900-1 1/4)		NA

REIL Rwy 3
REIL Rwy 21 **①**
MIRL Rwy 3-21 **①**