

APP CRS	Rwy Ldg	N/A
348°	TDZE	N/A
	Apt Elev	1427

RNAV (GPS)-A

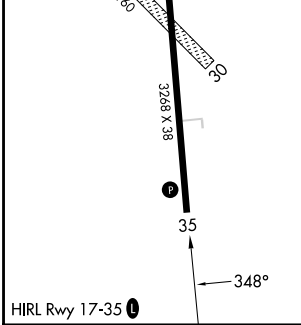
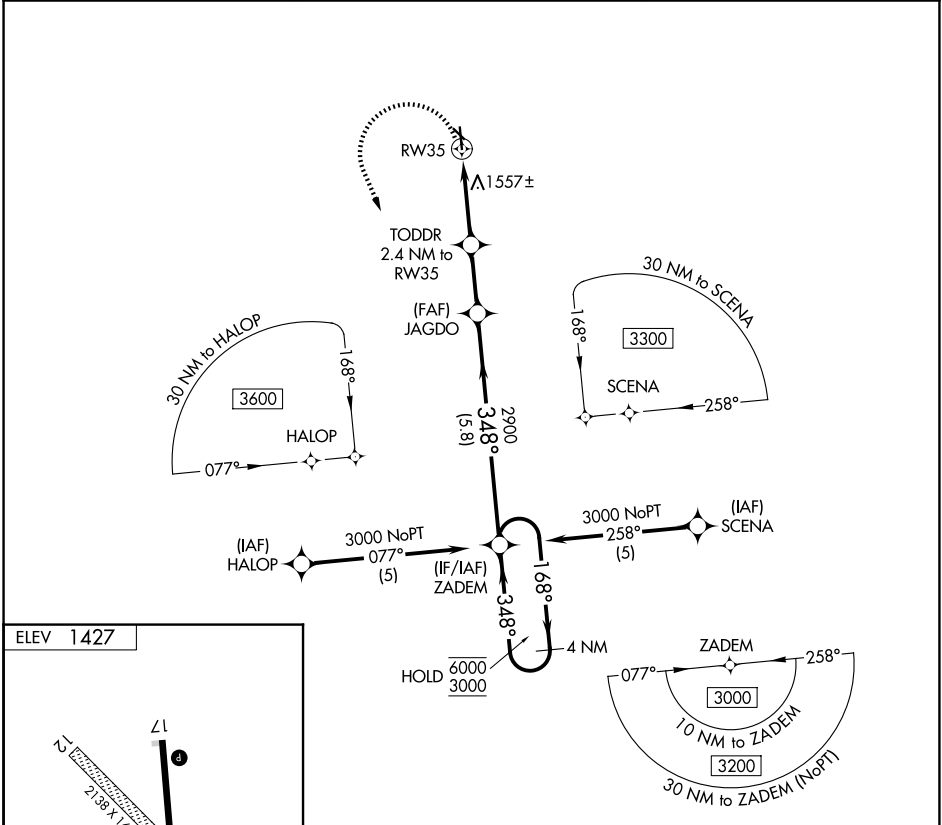
HARPER MUNI (8K2)

RNP APCH - GPS.

Procedure NA at night. Circling NA to Rwy 12 and 30. Use ICT altimeter setting; when not received, procedure NA.

MISSED APPROACH: Climbing left turn to 3000 direct ZADEM and hold.

ICT ASOS 125.15	WICHITA APP CON 126.7 353.5	CTAF 122.9
---------------------------	---------------------------------------	----------------------



3000	ZADEM	VGSI and descent angles not coincident (VGSI Angle 3.25/TCH 58).	
	JAGDO	ZADEM	4 NM Holding Pattern
TODDR 2.4 NM to RW35			168° → 6000
			← 348° 3000
RW35	2300	2900	
	2.4 NM	1.7 NM	5.8 NM
CATEGORY	A	B	C D
CIRCLING	2020-1	593 (600-1)	NA

NC-2, 14 MAY 2026 to 11 JUN 2026

NC-2, 14 MAY 2026 to 11 JUN 2026