

APP CRS	Rwy Ldg	5501
347°	TDZE	308
	Apt Elev	319

RNAV (GPS) RWY 35

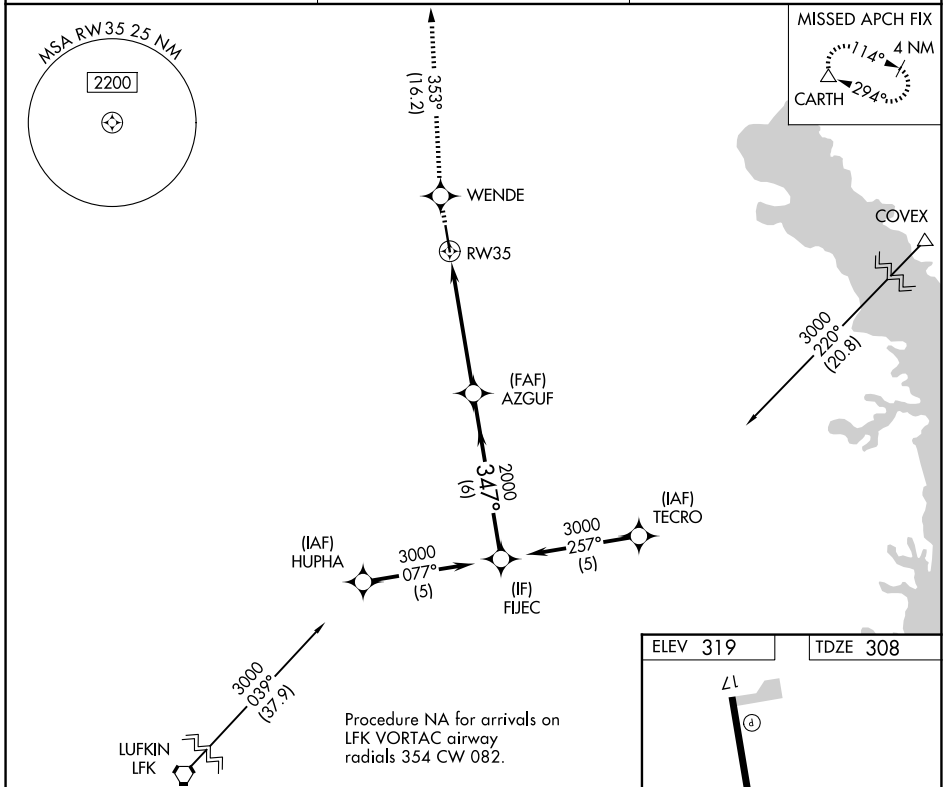
CENTER MUNI (F17)

RNP APCH - GPS.

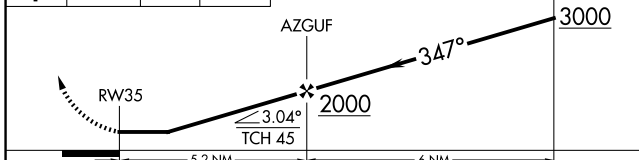
▼ Rwy 35 helicopter visibility reduction below 1 SM NA.
▲ Procedure NA at night.

MISSED APPROACH: Climb to 3800 direct WENDE and on track 353° to CARTH and hold.

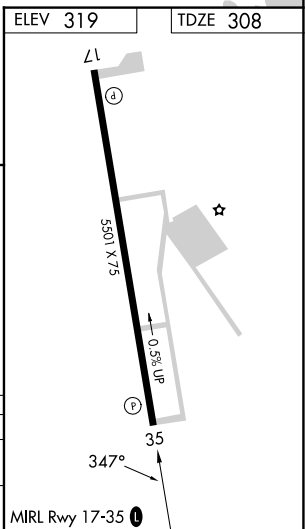
AWOS-3PT 128.775	FORTH WORTH CENTER 126.325 346.25	UNICOM 122.8 (CTAF) 0
----------------------------	---	---------------------------------



3800	WENDE	CARTH	VGSI and descent angles not coincident (VGSI Angle 3.00/TCH 49).	FIJEC
↑	✧	△		
	tr			
	353°			



CATEGORY	A	B	C	D
LNVA MDA	960-1 652 (700-1)		960-1 652 (700-1) 7/8	NA
CIRCLING	960-1 641 (700-1)		1160-2 841 (900-2) 1/2	NA



SC-5, 14 MAY 2026 to 11 JUN 2026

SC-5, 14 MAY 2026 to 11 JUN 2026