

APP CRS	Rwy Idg	<b>5000</b>
<b>141°</b>	TDZE	<b>3730</b>
	Apt Elev	<b>3730</b>

# RNAV (GPS) RWY 14

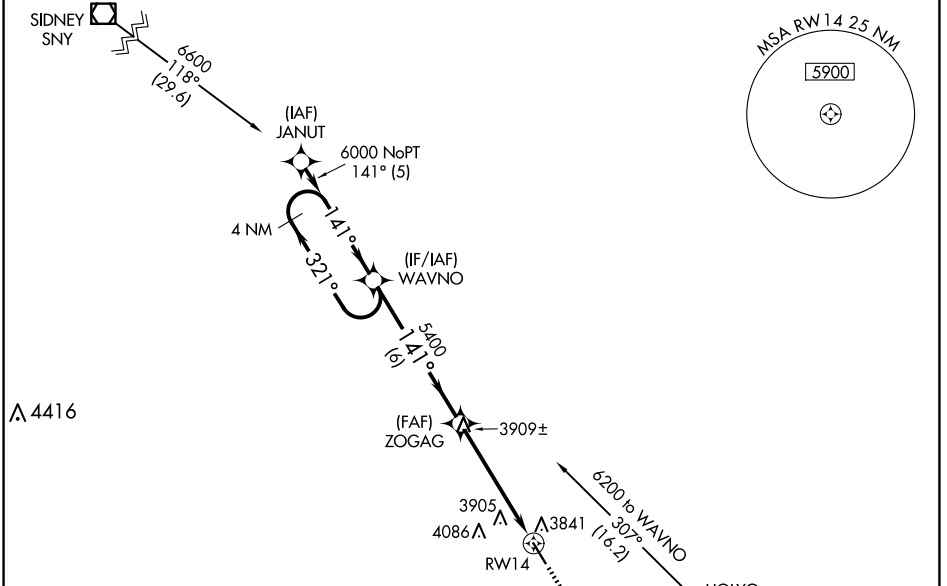
HOLYOKE (HEQ)

RNP APCH - GPS.

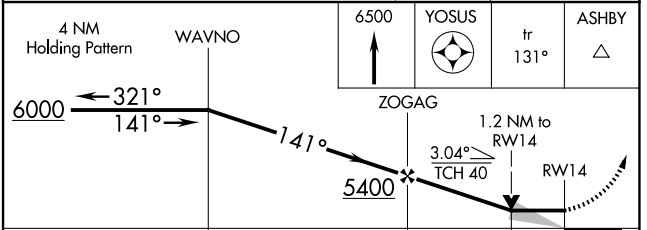
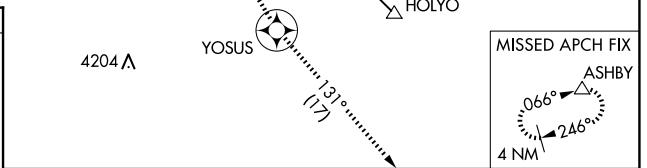
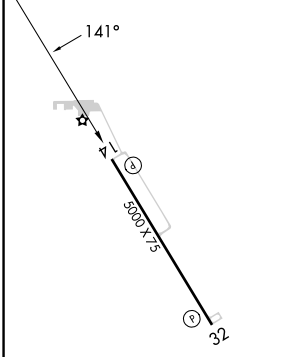
⚠ NA When local altimeter setting not received, use Sidney Muni/Lloyd W Carr Fld altimeter setting: increase all MDAs 200 feet and increase visibility LNAV Cats C and D ½ SM and Circling Cats C and D ¾ SM. VDP NA when using Sidney Muni/Lloyd W Carr Fld altimeter setting.

MISSED APPROACH: Climb to 6500 direct YOSUS and via 131° track to ASHBY and hold.

AWOS-3 <b>119.275</b>	DENVER CENTER <b>118.475 225.4</b>	UNICOM <b>122.7 (CTAF) 0</b>
--------------------------	---------------------------------------	---------------------------------



ELEV 3730	TDZE 3730
-----------	-----------



CATEGORY	A	B	C	D
LNAV MDA	4160-1	430 (500-1)	4160-1 ¼	430 (500-1 ¼)
CIRCLING	4200-1 470 (500-1)	4240-1 510 (600-1)	4400-1 ¾ 670 (700-1 ¾)	4400-2 670 (700-2)

MIRL Rwy 14-32 0  
REIL Rwy 14 and 32 0

HOLYOKE, COLORADO  
Orig-H 03NOV22

40°34'N-102°16'W

# RNAV (GPS) RWY 14

SW-1, 14 MAY 2026 to 11 JUN 2026

SW-1, 14 MAY 2026 to 11 JUN 2026