

ALBUQUERQUE CENTER  
125.4 269.3

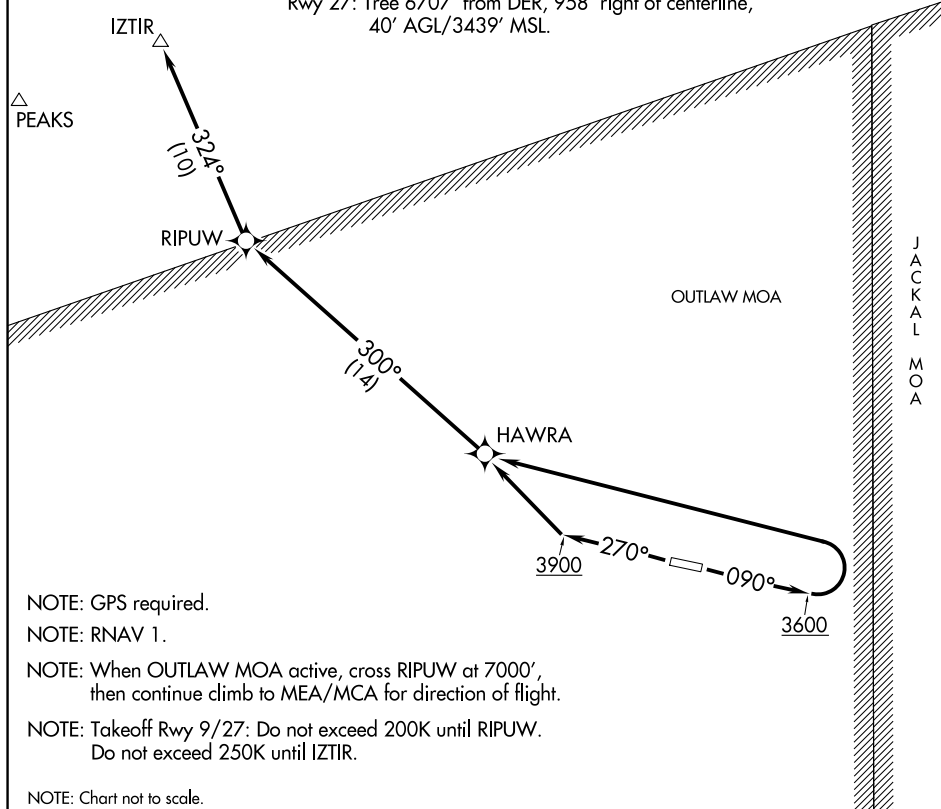
△ SALTS

TAKEOFF MINIMUMS

Rwy 9: Standard with minimum climb of 409' per NM to 6900.  
Rwy 27: Standard with minimum climb of 370' per NM to 5500.

TAKEOFF OBSTACLE NOTES

Rwy 9: Numerous trees beginning 566' from DER, 126' right of centerline, up to 40' AGL/3289' MSL.  
Rwy 27: Tree 6707' from DER, 958' right of centerline, 40' AGL/3439' MSL.



SW-4, 14 MAY 2026 to 11 JUN 2026

SW-4, 14 MAY 2026 to 11 JUN 2026

NOTE: GPS required.

NOTE: RNAV 1.

NOTE: When OUTLAW MOA active, cross RIPUW at 7000', then continue climb to MEA/MCA for direction of flight.

NOTE: Takeoff Rwy 9/27: Do not exceed 200K until RIPUW. Do not exceed 250K until IZTIR.

NOTE: Chart not to scale.

DEPARTURE ROUTE DESCRIPTION

TAKEOFF RUNWAY 9: Climb heading 090° to 3600, then climbing left turn direct HAWRA, then via depicted route to IZTIR. Thence. . . .

TAKEOFF RUNWAY 27: Climb heading 270° to 3900, then climbing right turn direct HAWRA, then via depicted route to IZTIR. Thence. . . .

. . . .climb on course to MEA for assigned route of flight.