

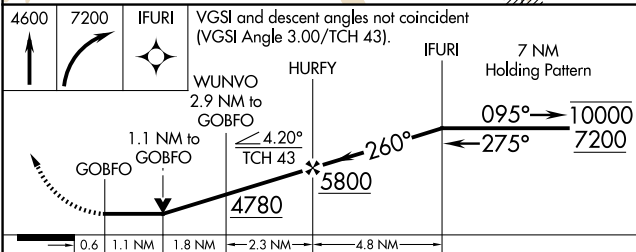
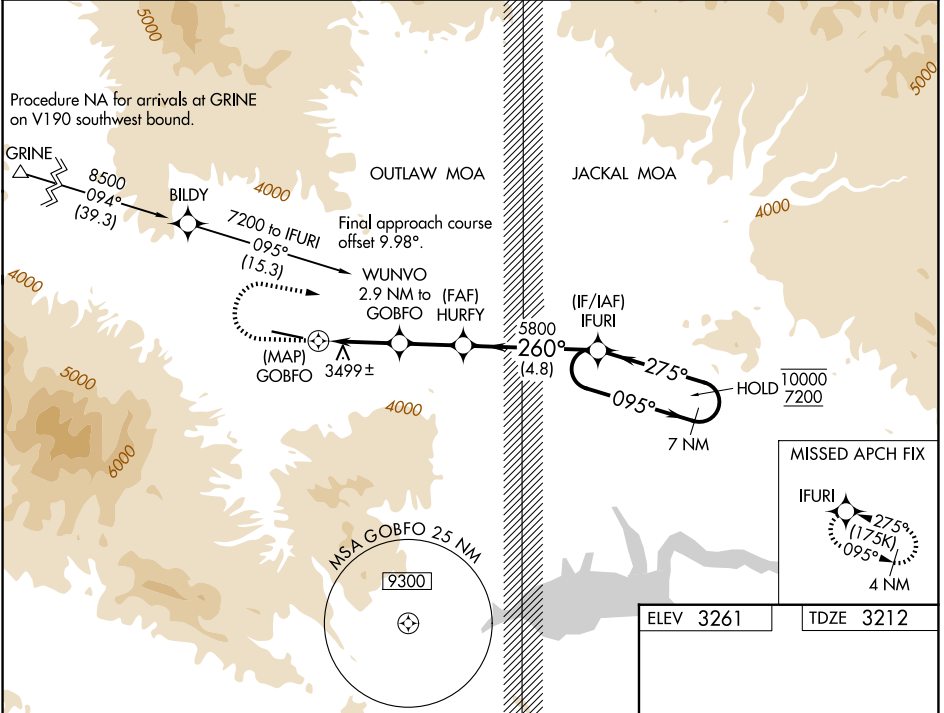
APP CRS	Rwy Ldg	<b>6500</b>
<b>260°</b>	TDZE	<b>3212</b>
	Apt Elev	<b>3261</b>

# RNAV (GPS) RWY 27

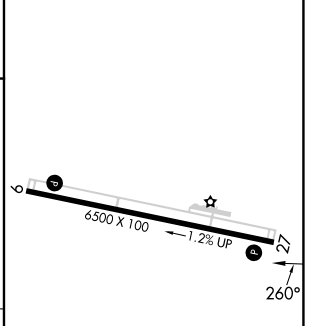
SAN CARLOS APACHE (P13)

RNP APCH.	MISSED APPROACH: (Do not exceed 175K until IFURI) Climb to 4600 then climbing right turn to 7200 direct IFURI and hold, do not exceed 230K when continuing climb-in-hold to 7200.
<p>▼ Rwy 27 helicopter visibility reduction below 3/4 SM NA.</p> <p>▲ NA VDP NA when using San Manuel altimeter setting. When local altimeter setting not received, use San Manuel altimeter setting and increase all MDA 120 feet.</p>	* Missed approach requires minimum climb of 290 feet per NM to 5340.

AWOS-3 <b>120.075</b>	ALBUQUERQUE CENTER <b>125.4 269.3</b>	UNICOM <b>122.8 (CTAF) 0</b>
--------------------------	--	---------------------------------



ELEV 3261	TDZE 3212
-----------	-----------



CATEGORY	A	B	C	D
LNAV MDA*	3760-1	548 (500-1)		NA
LNAV MDA	4180-1 1/4 968 (1000-1 1/4)	4180-1 1/2 968 (1000-1 1/2)		NA
CIRCLING	4180-1 1/4 919 (1000-1 1/4)	4180-1 1/2 919 (1000-1 1/2)		NA

MIRL Rwy 9-27 0  
REIL Rws 9 and 27

SW-4, 14 MAY 2026 to 11 JUN 2026

SW-4, 14 MAY 2026 to 11 JUN 2026