

APP CRS	Rwy Ldg	2672
204°	TDZE	181
	Apt Elev	181

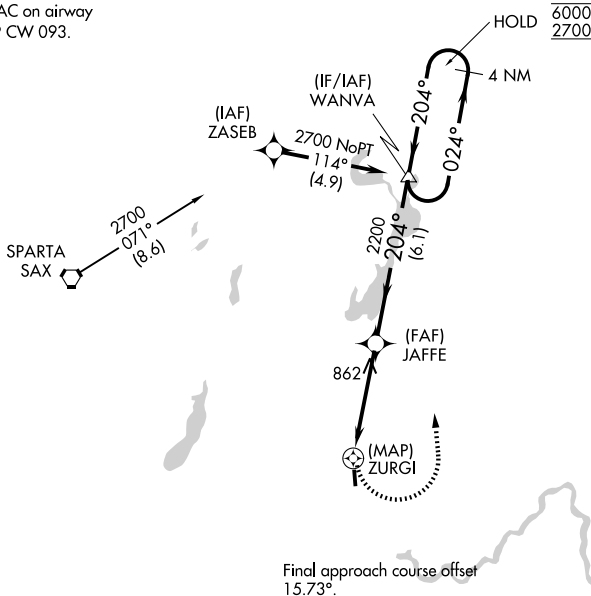
RNAV (GPS) RWY 19

LINCOLN PARK (NØ7)

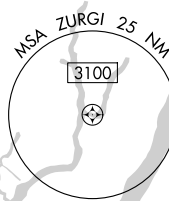
RNP APCH.	<p>▼ Rwy 19 helicopter visibility reduction below 1 SM NA. ▲ NA Use Teterboro altimeter setting. Procedure NA at night.</p>	MISSED APPROACH: Climbing left turn to 2700 direct WANVA and hold.
-----------	--	--

TEB D-ATIS 114.2 132.85	NEWARK APP CON 127.6 379.9	GCO 121.725	UNICOM 122.8 (CTAF) Ø
-----------------------------------	--------------------------------------	-----------------------	---------------------------------

Procedure NA for arrivals at SAX VORTAC on airway radials 029 CW 093.



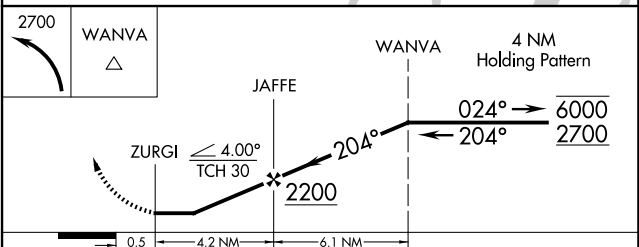
Final approach course offset 15.73°.



ELEV 181	TDZE 181
----------	----------



HIRL Rwy 1-19 Ø



CATEGORY	A	B	C	D
LNAV MDA	1300-1¼ 1119 (1200-1¼)		NA	
CIRCLING	1300-1¼ 1119 (1200-1¼)		NA	

NE-2, 14 MAY 2026 to 11 JUN 2026

NE-2, 14 MAY 2026 to 11 JUN 2026