

WINTERS, TEXAS

AL-6639 (FAA)

25163

WAAS CH <b>49022</b> <b>W36A</b>	APP CRS <b>356°</b>	Rwy Ldg TDZE <b>1871</b> Apt Elev <b>1871</b>
--	------------------------	---

# RNAV (GPS) RWY 36

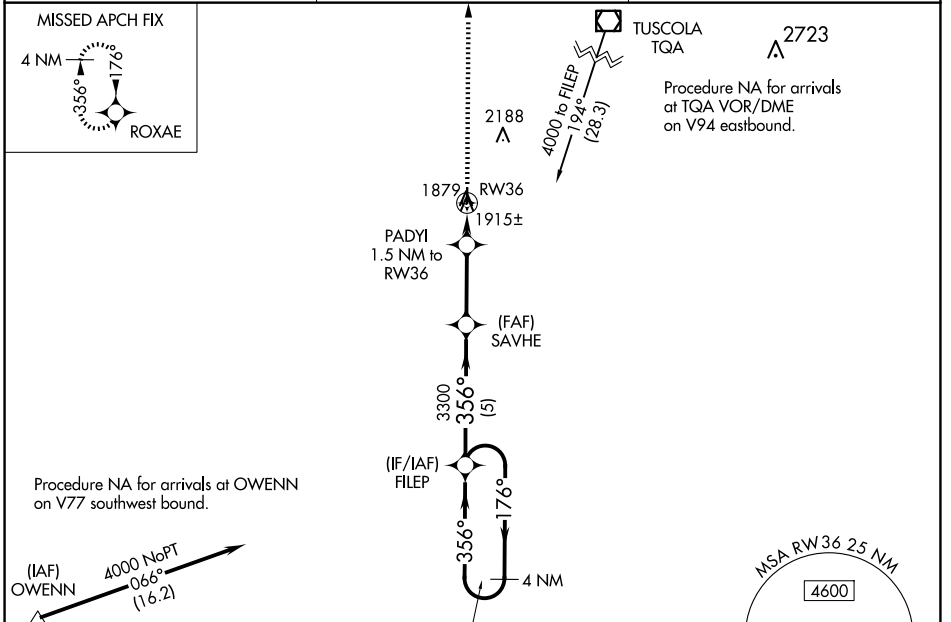
WINTERS MUNI (77F)

RNP APCH - GPS.

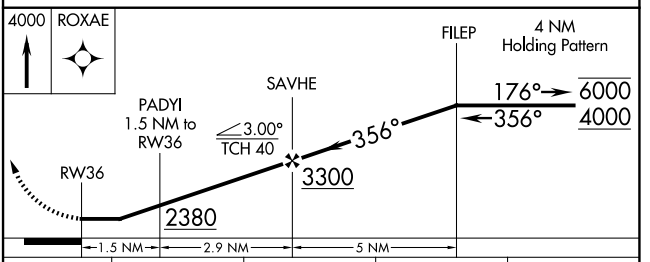
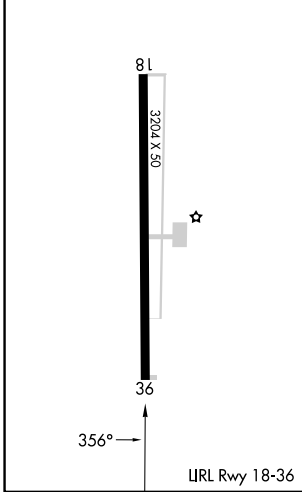
**NA** Rwy 36 helicopter visibility reduction below 1 SM NA. Use ABI altimeter setting; when not received, use COM altimeter setting and increase all MDAs 20 feet. Straight-in/Circling Rwy 36 procedure NA at night.

**MISSED APPROACH:** Climb to 4000 direct ROXAE and hold.

ABI ASOS <b>118.25</b>	ABILENE APP CON <b>127.2 282.3</b>	CTAF <b>122.9</b>
---------------------------	---------------------------------------	----------------------



ELEV 1871	TDZE 1871
-----------	-----------



CATEGORY	A	B	C	D
LP MDA	2260-1	389 (400-1)	NA	
LNAV MDA	2260-1	389 (400-1)	NA	
CIRCLING	2440-1 569 (600-1)	2520-1 649 (700-1)	NA	

WINTERS, TEXAS  
Amdt 1 12JUN25

31°57'N-99°59'W

# RNAV (GPS) RWY 36

SC-3, 14 MAY 2026 to 11 JUN 2026

SC-3, 14 MAY 2026 to 11 JUN 2026