

WAAS CH 58335 W23A	APP CRS 233°	Rwy Ldg TDZE Apt Elev	5005 273 273
--	------------------------	-----------------------------	---

RNAV (GPS) RWY 23

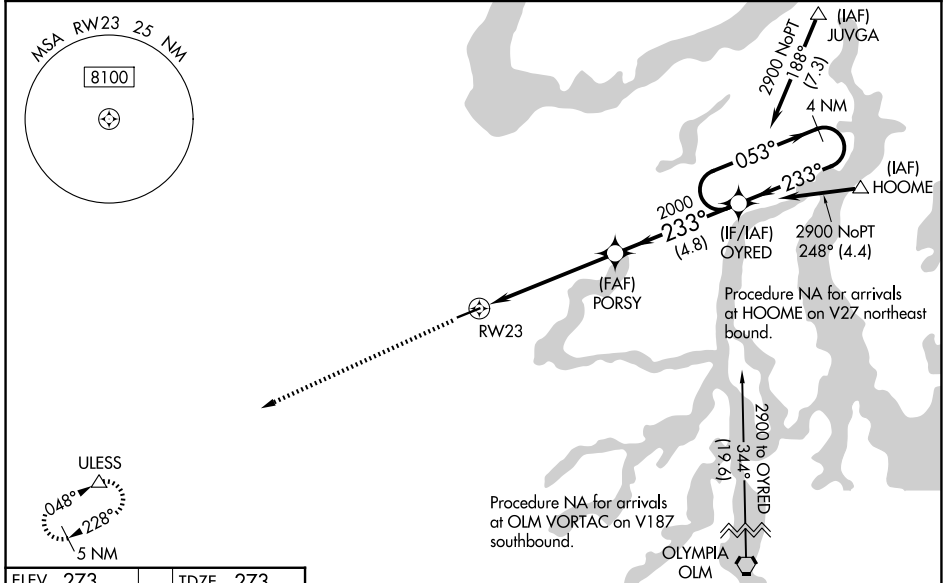
SANDERSON FLD (SHN)

RNP APCH.

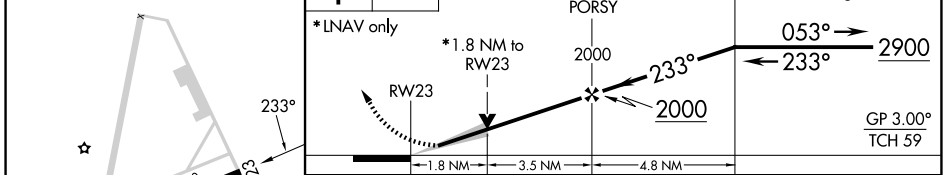
⚠ For uncompensated Baro-VNAV systems, LNAV/VNAV NA below -10°C or above 54°C.
 ⚠ Rwy 23 helicopter visibility reduction below 3/4 SM NA. Baro-VNAV and VDP NA when using Olympia altimeter setting. Circling NA for Cats C and D south of Rwy 5-23. When local altimeter setting not received, use Olympia altimeter setting: increase #LPV DA to 576 feet, LPV DA to 720 feet, and LNAV/VNAV DA to 773 feet and all visibilities 1/4 SM; increase all MDAs 60 feet and visibility LNAV Cat C and D and Circling Cat C visibility 1/8 SM.
 # LPV missed approach requires minimum climb of 244 feet per NM to 1700.

MISSED APPROACH:
Climb to 3200 direct ULESS and hold.

ASOS 119.275	SEATTLE APP CON 121.1 290.9	UNICOM 122.8 (CTAF)
------------------------	---------------------------------------	-------------------------------



ELEV 273	TDZE 273	3200 ULESS	VGSI and RNAV glidepath not coincident (VGSI Angle 3.00/TCH 47).
----------	----------	------------	--



CATEGORY	A	B	C	D
LPV DA#	523-3/4 250 (300-3/4)			
LPV DA	667-1 1/4 394 (400-1 1/4)			
LNAV/VNAV DA	720-1 1/2 447 (500-1 1/2)			
LNAV MDA	880-1 607 (700-1)		880-1 3/4 607 (700-1 3/4)	
CIRCLING	880-1 607 (700-1)		880-1 3/4 607 (700-1 3/4) 1200-3 927 (1000-3)	

NW-1, 14 MAY 2026 to 11 JUN 2026

NW-1, 14 MAY 2026 to 11 JUN 2026

REIL Rwy 23
MIRL Rwy 5-23