

LOC/DME I-EFE <b>109.35</b> Chan <b>30(Y)</b>	APP CRS <b>179°</b>	Rwy Ldg TDZE Apt Elev	<b>7002</b> <b>576</b> <b>589</b>
---	------------------------	-----------------------------	---

# ILS or LOC RWY 18

MCKINNEY NTL (TKI)

DME required for procedure entry.  
DME required.

▼ VDP NA when using Dallas Love Fld altimeter setting. When local altimeter setting not received, use Dallas Love Fld altimeter setting and increase all DA 70 feet and all MDA 80 feet, increase S-LOC 18 Cats C/D visibility 1/2 SM, increase Circling visibility Cat C 1/2 SM, Cat D 1/4 SM. For inop ALS, increase S-LOC 18 Cats C/D visibility to 1 SM. For inop ALS when using Dallas Love Fld altimeter setting, increase S-ILS 18 all Cats visibility to 2/3 SM and increase S-LOC 18 Cats C/D to 1 1/4 SM.

MALSR

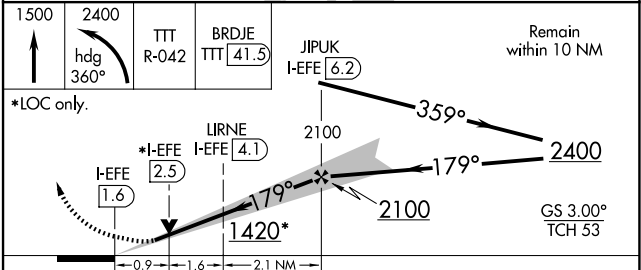
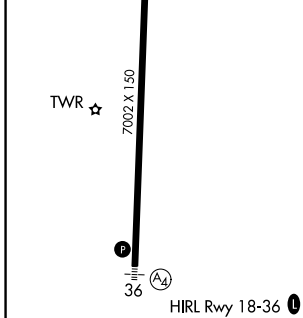
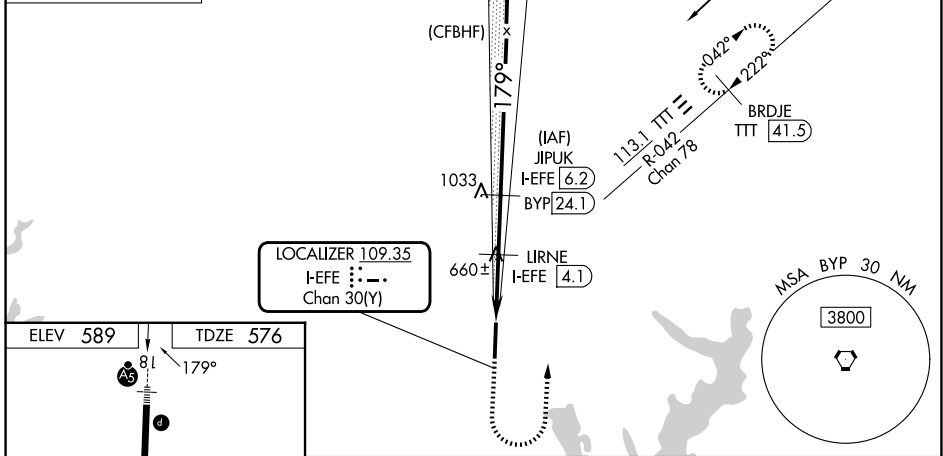
MISSED APPROACH:  
Climb to 1500 then climbing left turn to 2400 on heading 360° and on TTT VOR/DME R-042 to BRDJE/TTT 41.5 DME and hold.

ATIS <b>119.925</b>	LONE STAR APP CON <b>124.3 282.275</b>	MCKINNEY TOWER ★ <b>118.825</b> (CTAF)	GND CON <b>121.875</b>	CLNC DEL <b>121.35</b> (When twr closed)	UNICOM <b>122.95</b>
------------------------	---	---	---------------------------	--	-------------------------

ALTERNATE MISSED APCH FIX

BONHAM  
BYP   
114.6  
Chan 93

BONHAM  
114.6 BYP   
Chan 93



CATEGORY	A	B	C	D
S-ILS 18	776-1/2 200 (200-1/2)			
S-LOC 18	920-1/2	344 (400-1/2)	920-5/8	344 (400-5/8)
CIRCLING	1040-1 451 (500-1)	1120-1 531 (600-1)	1200-1 3/4 611 (700-1 3/4)	1380-2 1/2 791 (800-2 1/2)

SC-2, 14 MAY 2026 to 11 JUN 2026

SC-2, 14 MAY 2026 to 11 JUN 2026