



WAAS CH <b>87102</b> W18A	APP CRS <b>179°</b>	Rwy Ldg TDZE Apt Elev	<b>7002</b> <b>576</b> <b>589</b>
---------------------------------	------------------------	-----------------------------	---

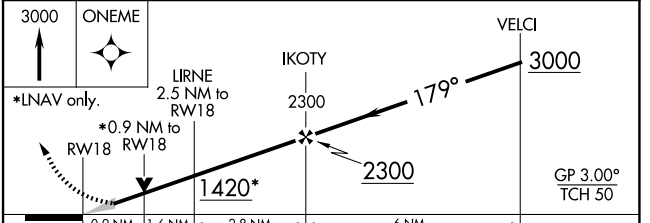
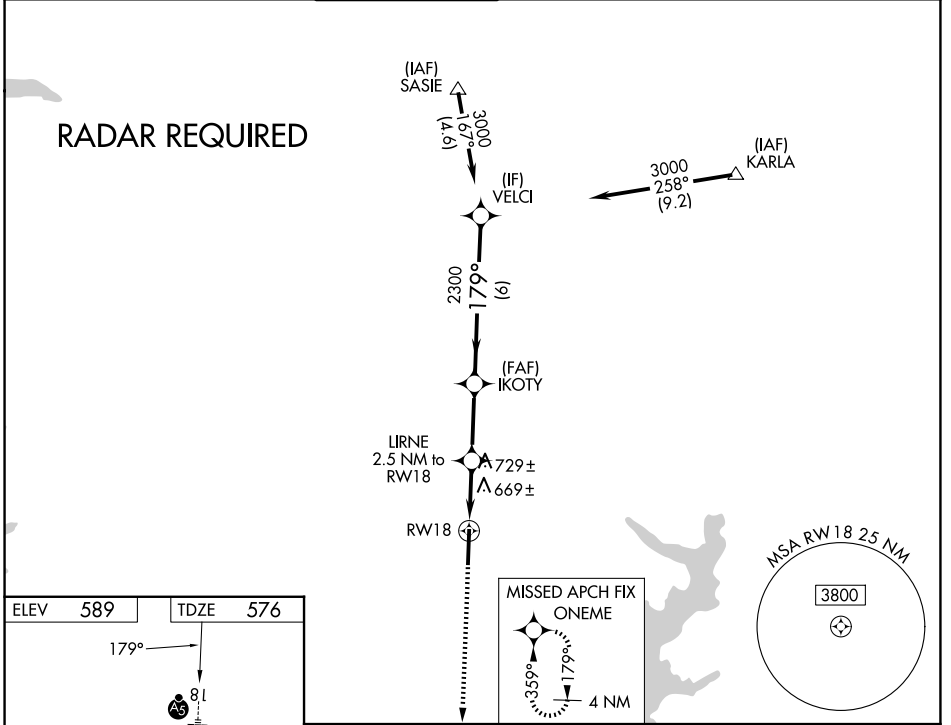
# RNAV (GPS) RWY 18

MCKINNEY NTL (TKI)

**⚠** DME/DME RNP-0.3 NA. VDP NA with Dallas Love Fld altimeter setting. When local altimeter setting not received, use Dallas Love Fld altimeter setting and increase all DA 70 feet and all MDA 80 feet, increase LNAV Cats C and D 1/8 mile, and Circling Cats C and D visibility 1/2 mile. For inop MALSR when using Dallas Love Fld altimeter setting increase LPV all Cats visibility to 1 mile.

**MALSR**  
 MISSED APPROACH: Climb to 3000 direct ONEME and hold.

ATIS <b>119.925</b>	LONE STAR APP CON <b>124.3 282.275</b>	<b>MCKINNEY TOWER ★</b> <b>118.825</b> (CTAF) 	GND CON <b>121.875</b>	CLNC DEL <b>121.35</b> (When twr closed)	UNICOM <b>122.95</b>
------------------------	---	--	---------------------------	--	-------------------------



CATEGORY	A	B	C	D
LPV DA	776-1/2		200 (200-1/2)	
LNAV MDA	920-1/2	344 (400-1/2)	920-5/8	344 (400-5/8)
CIRCLING	1040-1 451 (500-1)	1120-1 531 (600-1)	1200-1 3/4 611 (700-1 3/4)	1380-2 1/2 791 (800-2 1/2)

SC-2, 14 MAY 2026 to 11 JUN 2026

SC-2, 14 MAY 2026 to 11 JUN 2026