

VORTAC BYP <b>114.6</b> Chan <b>93</b>	APP CRS <b>214°</b>	Rwy Ldg TDZE Apt Elev <b>N/A</b> <b>N/A</b> <b>589</b>
--	------------------------	---

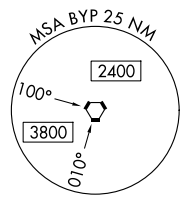
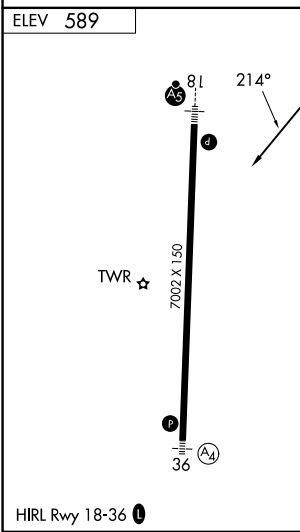
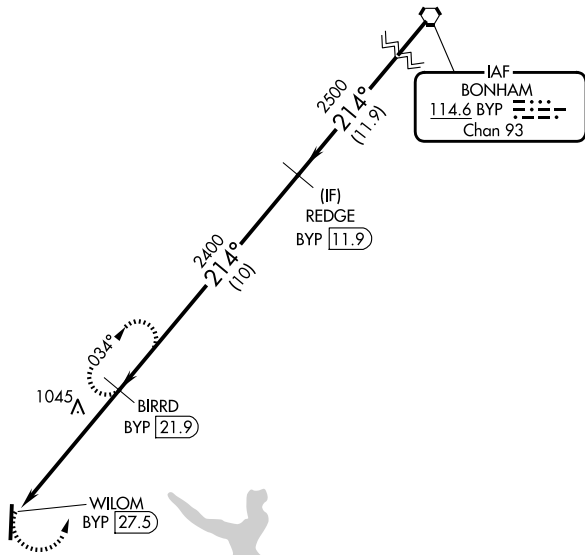
**VOR/DME-A**  
MCKINNEY NTL (TKI)

⚠ When local altimeter setting not received use Dallas Love Fld altimeter setting and increase all MDA 80 feet and Cats C and D visibility 1/4 mile.

MISSED APPROACH: Climbing left turn to 2400 on BYP VORTAC R-214 to BIRRD/BYP 21.9 DME and hold.

ATIS <b>119.925</b>	LONE STAR APP CON <b>124.3 282.275</b>	MCKINNEY TOWER ★ <b>118.825</b> (CTAF) <b>0</b>	GND CON <b>121.875</b>	CLNC DEL <b>121.35</b> (When twr closed)	UNICOM <b>122.95</b>
------------------------	---	--	---------------------------	--	-------------------------

Procedure NA for arrivals on BYP VORTAC airway radials 173 CW 264.



	2400 BIRRD BYP 21.9 BYP R-214	2400 BIRRD BYP 21.9	2500 REDGE BYP 11.9	2500 BYP VORTAC
	5.6 NM	10 NM	11.9 NM	
CATEGORY	A	B	C	D
CIRCLING	1360-1 771 (800-1)	1360-1¼ 771 (800-1¼)	1360-2¼ 771 (800-2¼)	1380-2½ 791 (800-2½)

SC-2, 14 MAY 2026 to 11 JUN 2026

SC-2, 14 MAY 2026 to 11 JUN 2026