

WAAS CH <b>90326</b> <b>W34A</b>	APP CRS <b>344°</b>	Rwy Ldg TDZE Apt Elev	<b>3502</b> <b>1279</b> <b>1279</b>
--	------------------------	-----------------------------	---

# RNAV (GPS) RWY 34

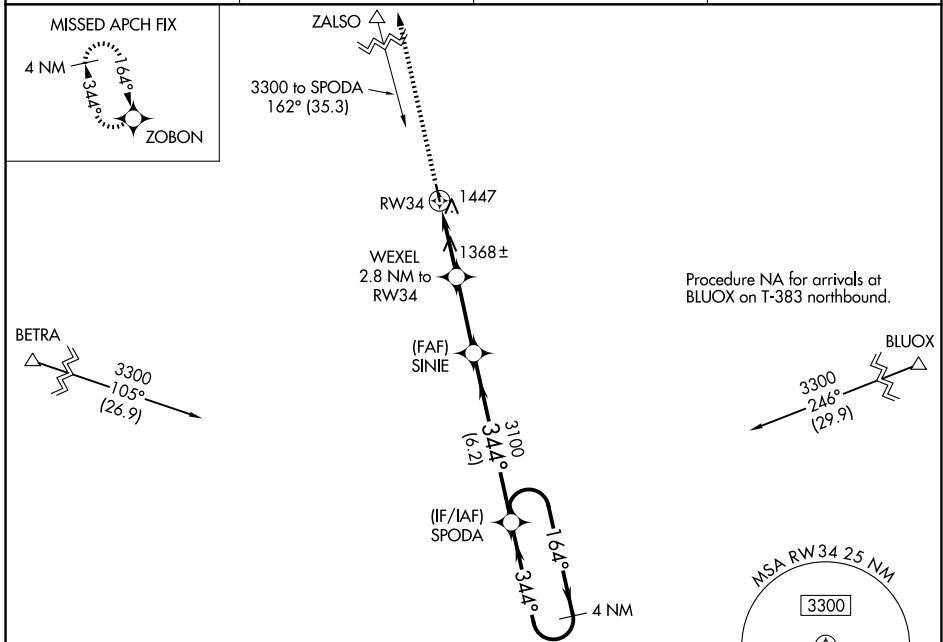
FOSSTON MUNI/ANDERSON FLD (F'SE)

**RNP APCH**

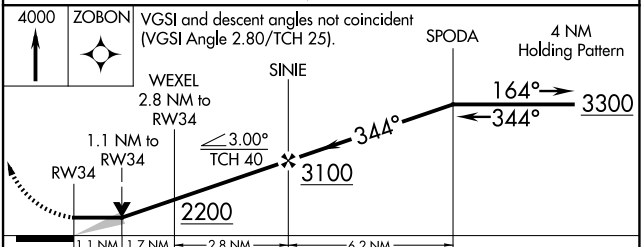
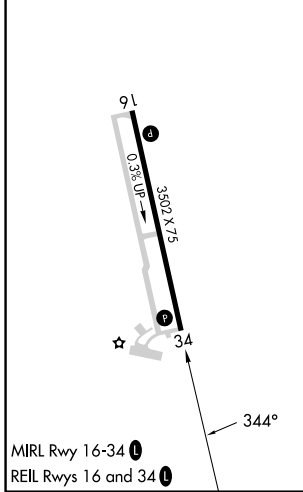
**▼** VDP NA when using Thief River Falls altimeter setting. When local altimeter setting not received, use Thief River Falls altimeter setting and increase all MDA 100 feet and increase LP and LNAV Cat C visibility  $\frac{3}{8}$  SM, and increase Circling Cat C visibility  $\frac{1}{2}$  SM.

**▲** MISSED APPROACH: Climb to 4000 direct ZOBON and hold.

AWOS-3 <b>118.35</b>	MINNEAPOLIS CENTER <b>134.75 251.1</b>	GCO <b>121.725</b>	CTAF <b>122.9 0</b>
-------------------------	---	-----------------------	------------------------



ELEV 1279	TDZE 1279
-----------	-----------



CATEGORY	A	B	C	D
LP MDA	1620-1 341 (400-1)			NA
LNAV MDA	1760-1	481 (500-1)	1760- $1\frac{3}{8}$ 481 (500- $1\frac{3}{8}$ )	NA
CIRCLING	1860-1	581 (600-1)	1860- $1\frac{1}{2}$ 581 (600- $1\frac{1}{2}$ )	NA

NC-1, 14 MAY 2026 to 11 JUN 2026

NC-1, 14 MAY 2026 to 11 JUN 2026