

APP CRS	Rwy Ldg	N/A
254°	TDZE	N/A
	Apt Elev	1478

# RNAV (GPS)-B

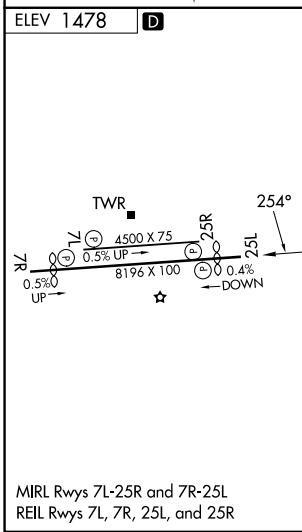
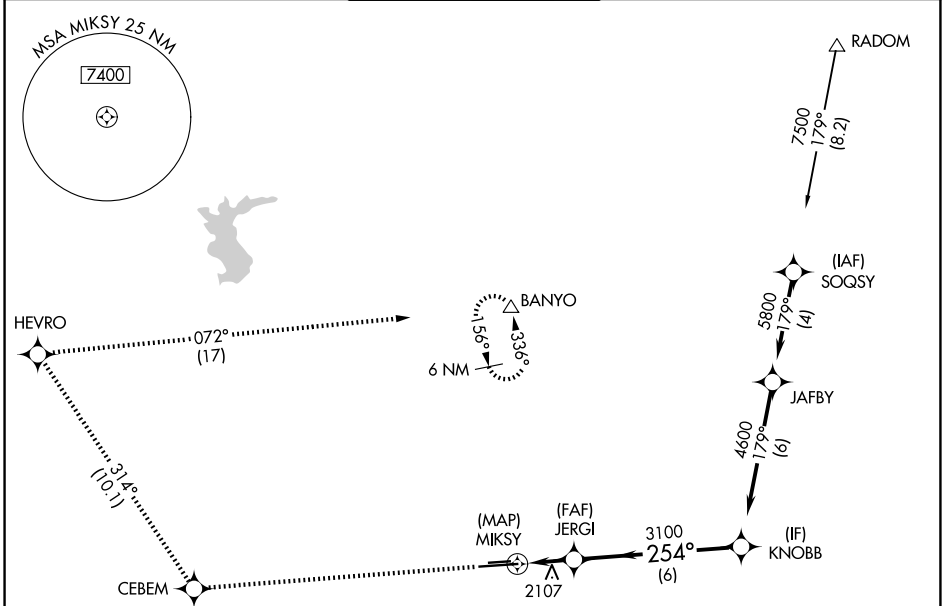
PHOENIX DEER VALLEY (DVT)

RNP APCH - GPS.

⚠ When VGSI inop, Circling to Rwy 25R NA at night. Circling not authorized at night north of Rwy 7R-25L. When local altimeter setting not received, use Scottsdale altimeter setting and increase all MDAs 40 feet and Circling Cat B visibility ¼ SM.

MISSED APPROACH: Climb to 6000 direct CEBEM and on track 314° to HEVRO and right turn on track 072° to BANYO and hold.

ATIS <b>126.5</b>	PHOENIX APP CON <b>120.7 239.0</b>	DEER VALLEY TOWER* <b>118.4</b> (070°-250°) (CTAF) <b>120.2</b> (251°-069°)	GND CON <b>121.8</b>	UNICOM <b>122.95</b>
----------------------	---------------------------------------	---	-------------------------	-------------------------



	6000	CEBEM	tr 314°	HEVRO	tr 072°	BANYO	4600	KNOBB
				JERGI				Procedure Turn NA
				MIKSY	≤ 6.80° TCH 40		3100	
CATEGORY	A	B	C	D				
CIRCLING	2400-1¼ 922 (1000-1¼)	2420-1¼ 942 (1000-1¼)	2580-3 1102 (1200-3)	NA				

SW-4, 14 MAY 2026 to 11 JUN 2026

SW-4, 14 MAY 2026 to 11 JUN 2026