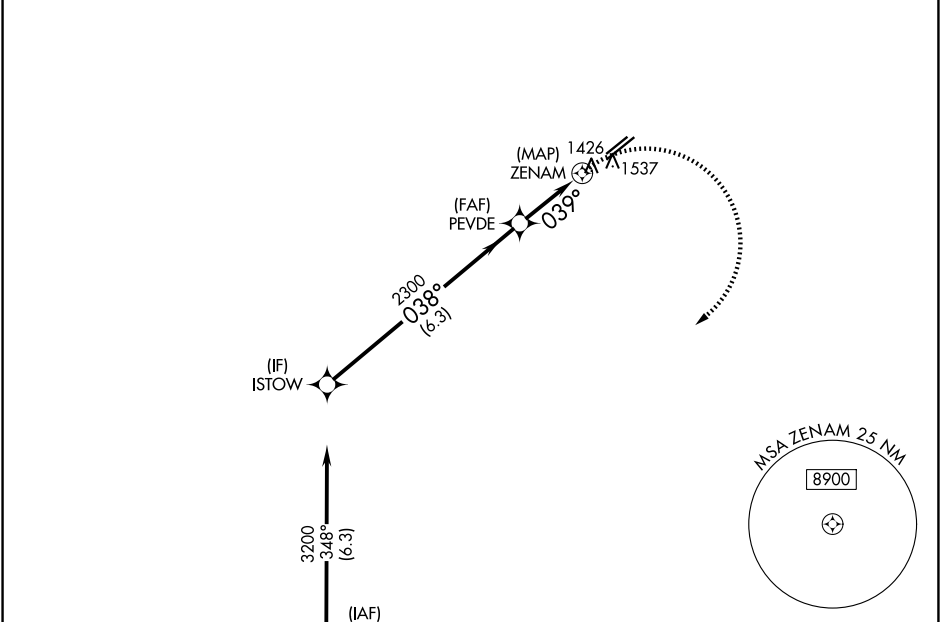


WAAS CH <b>56625</b> <b>W04A</b>	APP CRS <b>039°</b>	Rwy Ldg TDZE Apt Elev	<b>3799</b> <b>1383</b> <b>1394</b>
--	------------------------	-----------------------------	---

# RNAV (GPS) RWY 4L

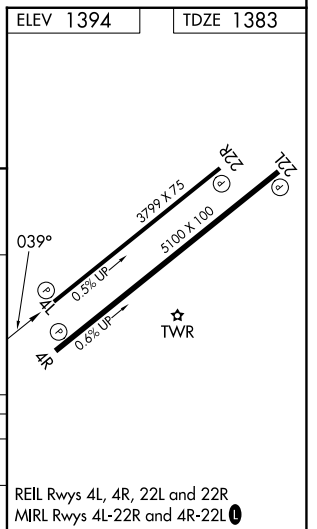
FALCON FLD (F'F'Z)

RNP APCH - GPS.		MISSED APPROACH: Climbing right turn to 5000 direct SACAT and hold, continue climb-in-hold to 5000.		
▼ ▲ Rwy 4L helicopter visibility reduction below 1 SM NA.				
ATIS <b>118.25</b>	PHOENIX APP CON <b>120.7 239.0</b>	FALCON TOWER * <b>124.6 (CTAF) 0</b>	GND CON <b>121.3</b>	UNICOM <b>122.95</b>



Procedure NA for arrivals at SACAT on V16 southeast bound.

ISTOW		VGSI and descent angles not coincident (VGSI Angle 4.00/TCH 42).		5000	SACAT
3200		PEVDE		3.00°	TCH 39
0.38°		2300		0.39°	
6.3 NM		2 NM		0.8	
CATEGORY	A	B	C	D	
LP MDA	1800-1	417 (500-1)	1800-1 1/8 417 (500-1 1/8)	NA	
LNAV MDA	1800-1	417 (500-1)	1800-1 1/8 417 (500-1 1/8)	NA	



SW-4, 14 MAY 2026 to 11 JUN 2026

SW-4, 14 MAY 2026 to 11 JUN 2026