

IZZO EIGHT DEPARTURE (RNAV)

AL-6648 (FAA)

PHOENIX GOODYEAR (GYR)
GOODYEAR, ARIZONA

SW-4, 14 MAY 2026 to 11 JUN 2026

TOP ALTITUDE: ASSIGNED BY ATC

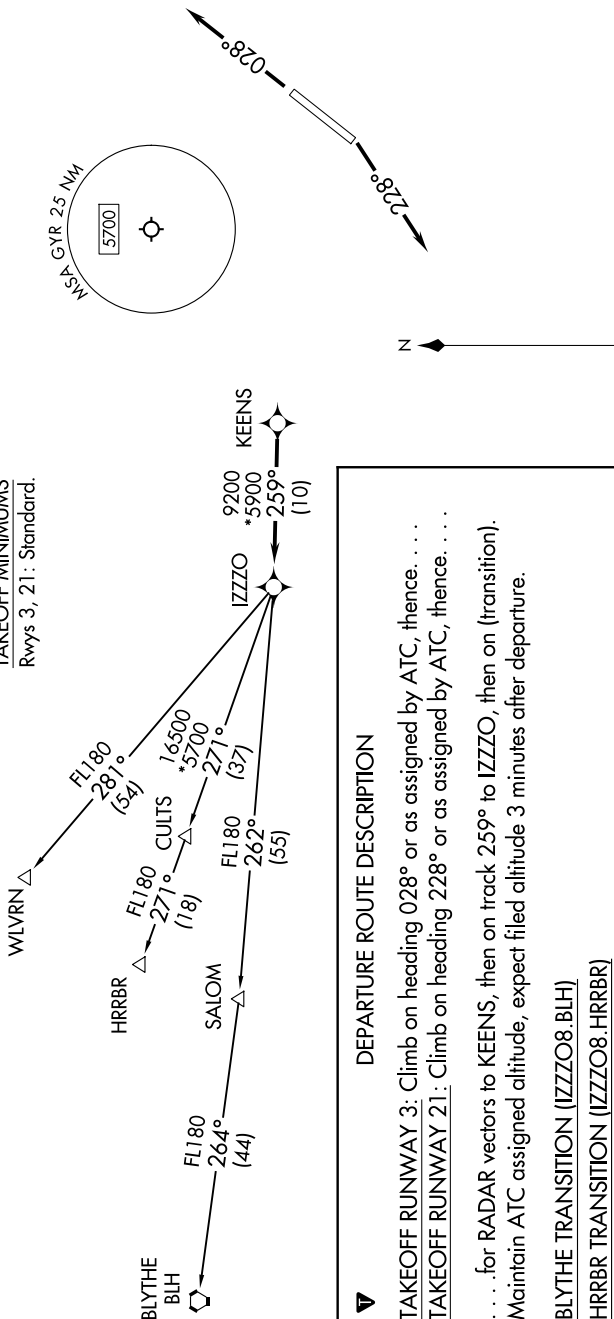
LUKE DEP CON*
125.45 263.125
PHOENIX DEP CON
120.7 239.0
ATIS
118.35
GND CON
121.7
GOODYEAR TOWER*
120.1 239.3

RNAV 1 - GPS.

RADAR required.

- NOTE: Turbojets and turboprops only.
- NOTE: Aircraft requesting FL220 and below must file BLYTHE Transition.
- NOTE: Turbojets landing LAX, file WLVRN Transition.
- NOTE: Aircraft landing other than LAX and turboprops landing at LAX: Requesting FL240 and above, file HRRBR Transition.
- NOTE: Aircraft departing KGEU and KGYR ATC assigned only.

TAKEOFF MINIMUMS
Rwys 3, 21: Standard.



DEPARTURE ROUTE DESCRIPTION

TAKEOFF RUNWAY 3: Climb on heading 028° or as assigned by ATC, thence. . . .
TAKEOFF RUNWAY 21: Climb on heading 228° or as assigned by ATC, thence. . . .
 . . . for RADAR vectors to KEENS, then on track 259° to IZZO, then on (transition).
 Maintain ATC assigned altitude, expect filed altitude 3 minutes after departure.

- BLYTHE TRANSITION (IZZO8.BLH)
- HRRBR TRANSITION (IZZO8.HRRBR)
- WLVRN TRANSITION (IZZO8.WLVRN)

NOTE: Chart not to scale.

IZZO EIGHT DEPARTURE (RNAV)

SW-4, 14 MAY 2026 to 11 JUN 2026