

(YOTES6.YOTES) 18144

# YOTES SIX DEPARTURE (RNAV)

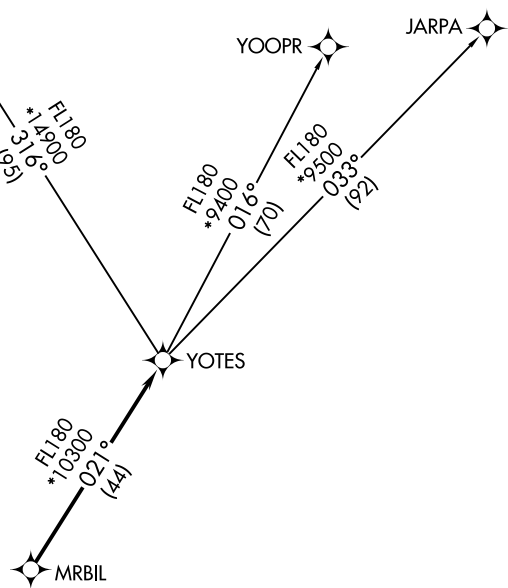
AL-6648 (FAA)

PHOENIX GOODYEAR (G·Y·R)  
GOODYEAR, ARIZONA

ATIS  
118.35  
GND CON  
121.7  
GOODYEAR TOWER ★  
120.1 239.3  
LUKE DEP CON★  
125.45 263.125  
PHOENIX DEP CON  
120.7 239.0

GRAND CANYON  
GCN

**TOP ALTITUDE:  
ASSIGNED BY ATC**



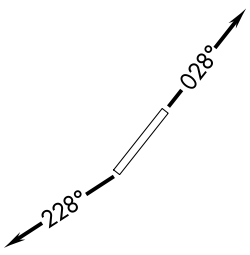
- NOTE: RNAV 1.
- NOTE: Turbjets and turboprops only.
- NOTE: RADAR required.
- NOTE: GPS required.
- NOTE: GCN TRANSITION ATC assigned only.
- NOTE: Aircraft departing KGEU and KGYR ATC assigned only.

TAKEOFF MINIMUMS  
Rwys 3, 21: Standard.

NOTE: Chart not to scale.

SW-4, 14 MAY 2026 to 11 JUN 2026

SW-4, 14 MAY 2026 to 11 JUN 2026



## DEPARTURE ROUTE DESCRIPTION

TAKEOFF RUNWAY 3: Climb heading 028° or as assigned by ATC, thence. . .

TAKEOFF RUNWAY 21: Climb heading 228° or as assigned by ATC, thence. . .

. . . expect RADAR vectors to MRBIL, then on track 021° to YOTES, then on (transition).  
Maintain ATC assigned altitude, expect filed altitude 3 minutes after departure.

GRAND CANYON TRANSITION (YOTES6.GCN)

JARPA TRANSITION (YOTES6.JARPA)

YOOPR TRANSITION (YOTES6.YOOPR)

# YOTES SIX DEPARTURE (RNAV)

(YOTES6.YOTES) 24MAY18

GOODYEAR, ARIZONA  
PHOENIX GOODYEAR (G·Y·R)