

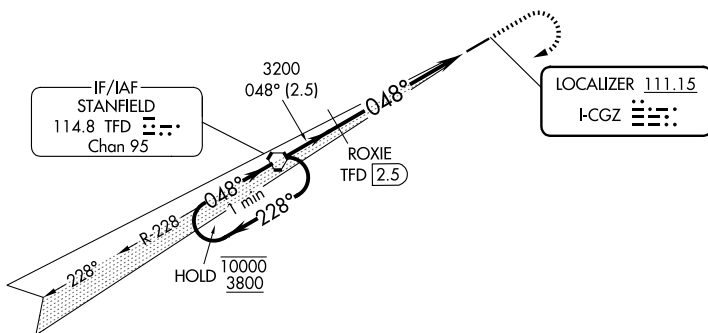
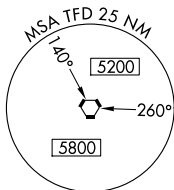
LOC I-CGZ 111.15	APP CRS 048°	Rwy Ldg TDZE Apt Elev	5200 1458 1464
----------------------------	------------------------	-----------------------------	---

ILS or LOC RWY 5

CASA GRANDE MUNI (CGZ)

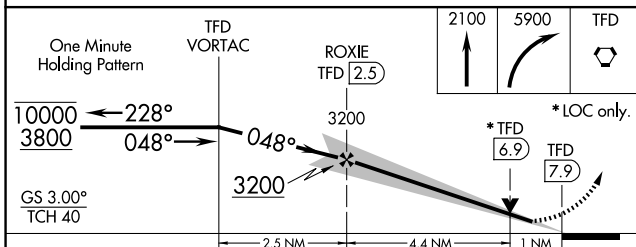
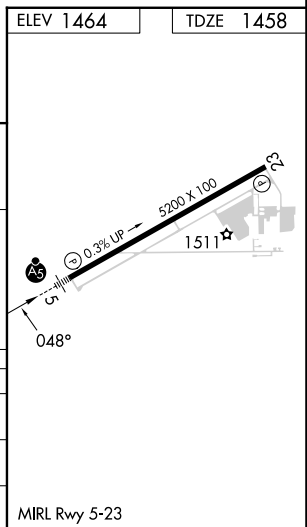
DME required for LOC only.		MALSR 	MISSED APPROACH: Climb to 2100 then climbing right turn to 5900 direct STANFIELD VORTAC and hold. Continue climb in hold to 5900.
NA Circling NA for Cat C and D northwest of Rwy 5-23. Autopilot coupled approach NA below 1650. DME from TFD VORTAC. Simultaneous reception of I-CGZ and TFD DME required. For inop ALS, increase S-LOC 5 Cat C/D visibility to 1 SM.			

AWOS-3PT 132.175	ALBUQUERQUE CENTER 125.4 269.3	UNICOM 122.7 (CTAF) 0
----------------------------	--	---------------------------------



SW-4, 14 MAY 2026 to 11 JUN 2026

SW-4, 14 MAY 2026 to 11 JUN 2026



CATEGORY	A	B	C	D
S-ILS 5	1708-1/2		250 (300-1/2)	
S-LOC 5	1800-1/2	342 (400-1/2)	1800-5/8	342 (400-5/8)
CIRCLING	1960-1	496 (500-1)	1960-1 1/2	2260-2 1/2
			496 (500-1 1/2)	796 (800-2 1/2)