

WAAS CH 61323 W22A	APP CRS 217°	Rwy Ldg TDZE 758 Apt Elev 758
--	------------------------	---

RNAV (GPS) RWY 22

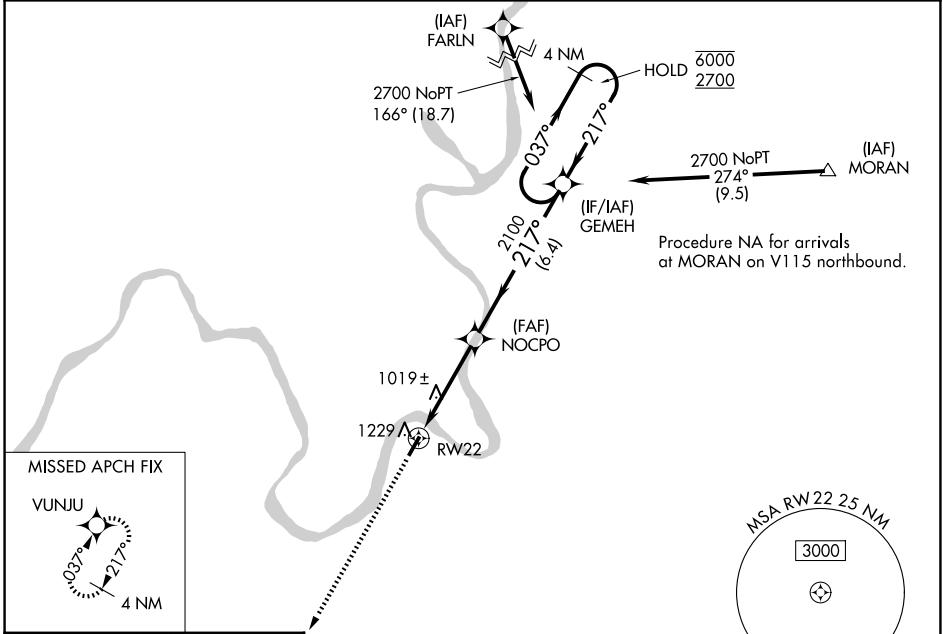
JACKSON COUNTY (I18)

RNP APCH - GPS.

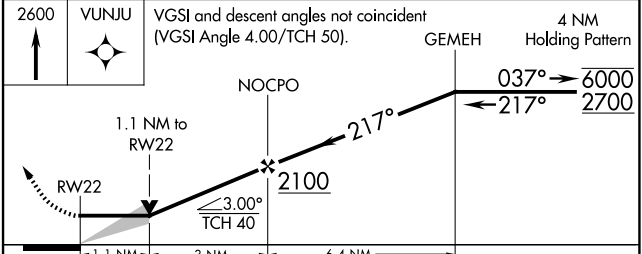
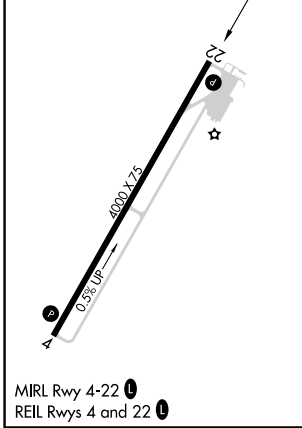
NA Circling Rwy 4 NA at night. VDP NA when using 312 altimeter setting. When local altimeter setting not received, use 312 altimeter setting and increase all MDAs 60 feet; increase LP visibility Cat C ¼ SM and Circling visibility Cat C ¼ SM.

MISSED APPROACH:
Climb to 2600 direct VUNJU and hold.

AWOS-2 121.3	HUNTINGTON APP CON 128.4 270.1	UNICOM 122.8 (CTAF) 0
------------------------	--	---------------------------------



ELEV 758	TDZE 758
----------	----------



CATEGORY	A	B	C	D
LP MDA	1280-1	522 (600-1)	1280-1½ 522 (600-1½)	NA
LNAV MDA	1540-1 782 (800-1)	1540-1¼ 782 (800-1¼)	1540-2½ 782 (800-2½)	NA
CIRCLING	1600-1¼	842 (900-1¼)	1600-2½ 842 (900-2½)	NA

NE-4, 14 MAY 2026 to 11 JUN 2026

NE-4, 14 MAY 2026 to 11 JUN 2026