

LOC I-RGK 110.1	APP CRS 091°	Rwy Ldg TDZE Apt Elev	5010 778 778
---------------------------	------------------------	-----------------------------	---

ILS or LOC RWY 9

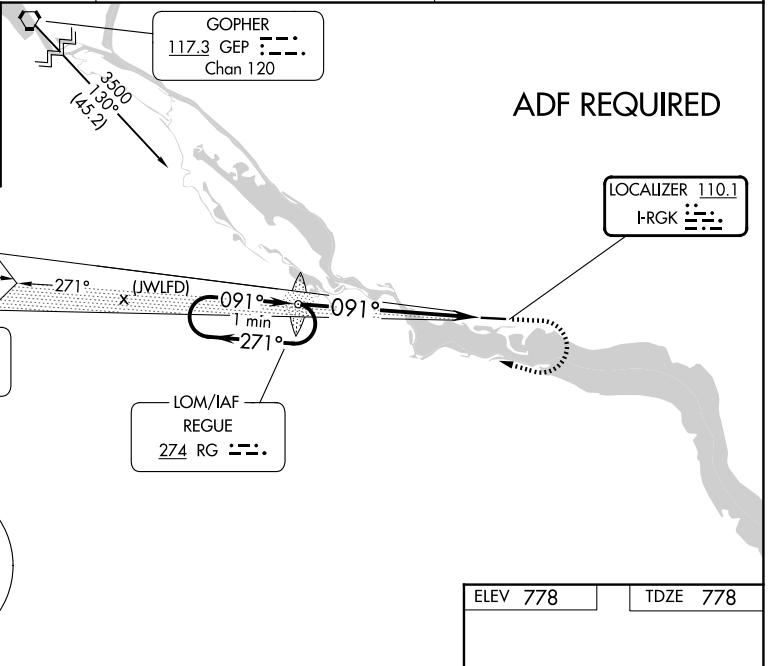
RED WING RGNL (RGK)

ADF Required. When local altimeter setting not received, use South St. Paul altimeter setting; increase S-ILS 9 DA to 1050 feet; increase all MDA 80 feet and visibility S-LOC 9 Cat C/D 1/8 SM and Circling Cat B/C 1/4 SM. For inop MALS, increase S-LOC 9 Cat C/D visibility 1/4 mile. For inop MALS, increase S-LOC 9 Cat C/D visibility 1/4 mile. For inop MALS when using South St. Paul altimeter setting, increase S-ILS 9 all Cats visibility 3/8 mile, and S-LOC 9 Cat C/D visibility 3/4 mile.

MALS
MISSED APPROACH:
 Climb to 2000 then climbing right turn to 3000 direct REGUE LOM and hold.

AWOS-3 119.25	MINNEAPOLIS APP CON 121.2 335.65	UNICOM 123.05 (CTAF)
-------------------------	--	--------------------------------

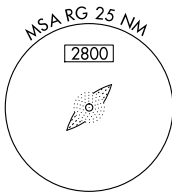
ALTERNATE MISSED APCH FIX
FARMINGTON
 FGT :
 115.7
 Chan 104
 265° R-085 →
 085°



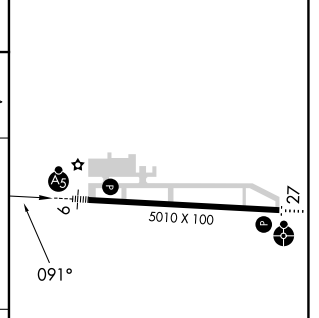
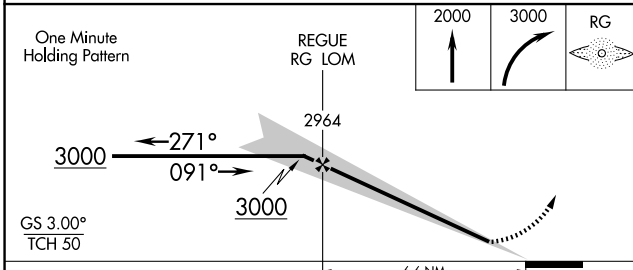
ADF REQUIRED

FARMINGTON
 115.7 FGT :
 Chan 104

LOM/IAF
 REGUE
 274 RG



ELEV 778	TDZE 778
----------	----------



CATEGORY	A	B	C	D
S-ILS 9	978-1/2		200 (200-1/2)	
S-LOC 9	1520-1/2 742 (800-1/2)	1520-3/4 742 (800-3/4)	1520-1 3/4	742 (800-1 3/4)
CIRCLING	1520-1	742 (800-1)	1640-2 1/2 862 (900-2 1/2)	1780-3 1002 (1100-3)

HIRL Rwy 9-27

FAF to MAP 6.6 NM					
Knots	60	90	120	150	180
Min:Sec	6:36	4:24	3:18	2:38	2:12

NC-1, 14 MAY 2026 to 11 JUN 2026

NC-1, 14 MAY 2026 to 11 JUN 2026