

WAAS CH 58225 W32A	APP CRS 324°	Rwy Idg TDZE Apt Elev	3600 977 992
--	------------------------	-----------------------------	---

RNAV (GPS) RWY 32

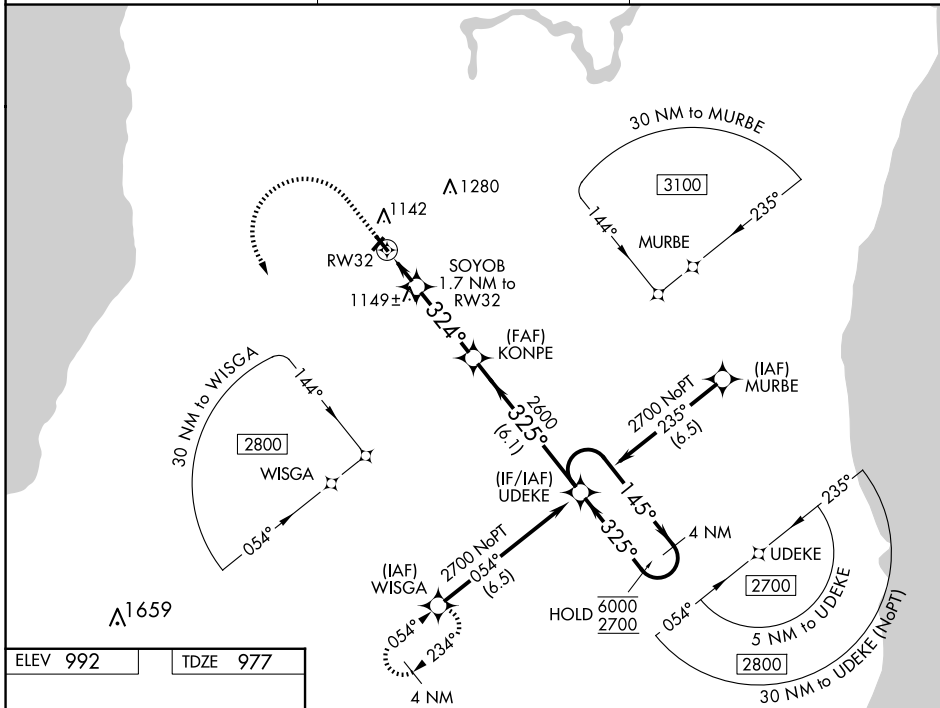
NEW HOLSTEIN MUNI (8D1)

RNP APCH.

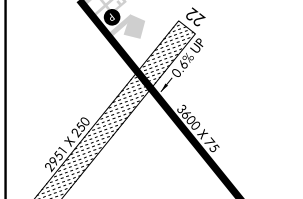
⚠ NA Circling NA to Rws 4 and 22. Rwy 32 helicopter visibility reduction below 1 SM NA.
Baro-VNAV NA. Use Oshkosh altimeter setting, when not received use Appleton altimeter setting. Straight-in Rwy 32 NA at night, Circling Rwy 32 NA at night.

MISSED APPROACH: Climb to 1500 then climbing left turn to 3000 direct WISGA and hold.

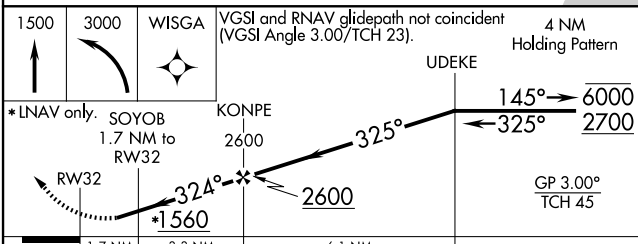
OSH ASOS 125.9	MILWAUKEE APP CON 127.0 263.075	UNICOM 123.0 (CTAF) 0
--------------------------	---	---------------------------------



ELEV 992	TDZE 977
----------	----------



REIL Rws 14 and 32	MIRL Rwy 14-32
--------------------	----------------



CATEGORY	A	B	C	D
LPV DA	1376-1 $\frac{1}{8}$	399 (400-1 $\frac{1}{8}$)		NA
LNAV/VNAV DA	1509-1 $\frac{1}{8}$	532 (600-1 $\frac{1}{8}$)		NA
LNAV MDA	1480-1	503 (500-1)		NA
CIRCLING	1540-1	548 (600-1)		NA

EC-3, 14 MAY 2026 to 11 JUN 2026

EC-3, 14 MAY 2026 to 11 JUN 2026