

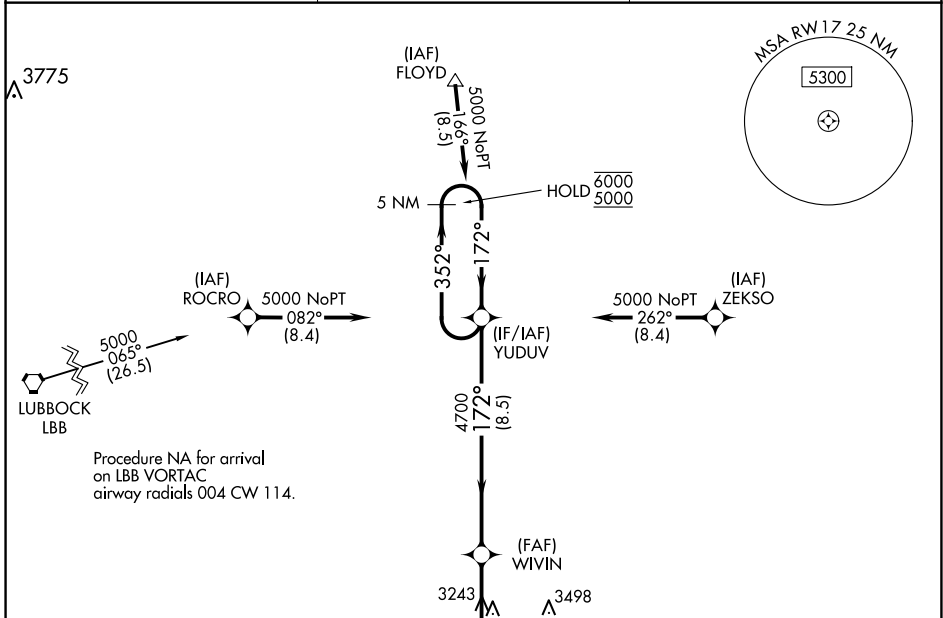
WAAS CH 82722 W17A	APP CRS 172°	Rwy Idg TDZE Apt Elev	3600 3018 3018
--	------------------------	-----------------------------	---

RNAV (GPS) RWY 17

CROSBYTON MUNI (8F3)

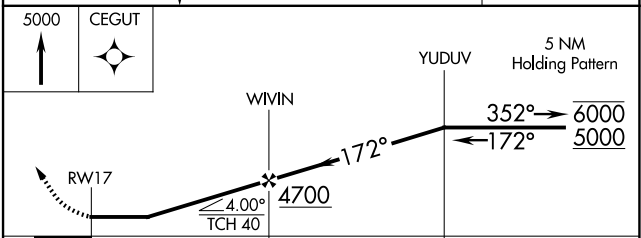
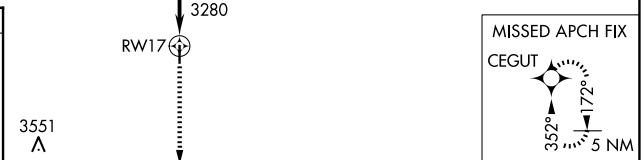
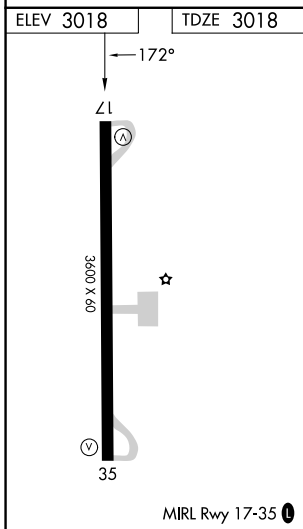
RNP APCH.	<p>Procedure NA at night.</p> <p>NA Rwy 17 helicopter visibility reduction below 1 SM NA. Use Lubbock altimeter setting.</p>	MISSED APPROACH: Climb to 5000 direct CEGUT and hold.
-----------	--	---

LBB ASOS 125.3	LUBBOCK APP CON 119.2 351.8	UNICOM 122.8 (CTAF) 0
--------------------------	---------------------------------------	---------------------------------



SC-2, 14 MAY 2026 to 11 JUN 2026

SC-2, 14 MAY 2026 to 11 JUN 2026



CATEGORY	A	B	C	D
LP MDA	3660-1	642 (700-1)	NA	
LNAV MDA	3700-1	682 (700-1)	NA	