

VOR/DME LRP 117.3 Chan 120	APP CRS 272°	Rwy Ldg 3250 TDZE 458 Apt Elev 458
--	------------------------	---

VOR RWY 28
DONEGAL SPRINGS AIRPARK (N71)

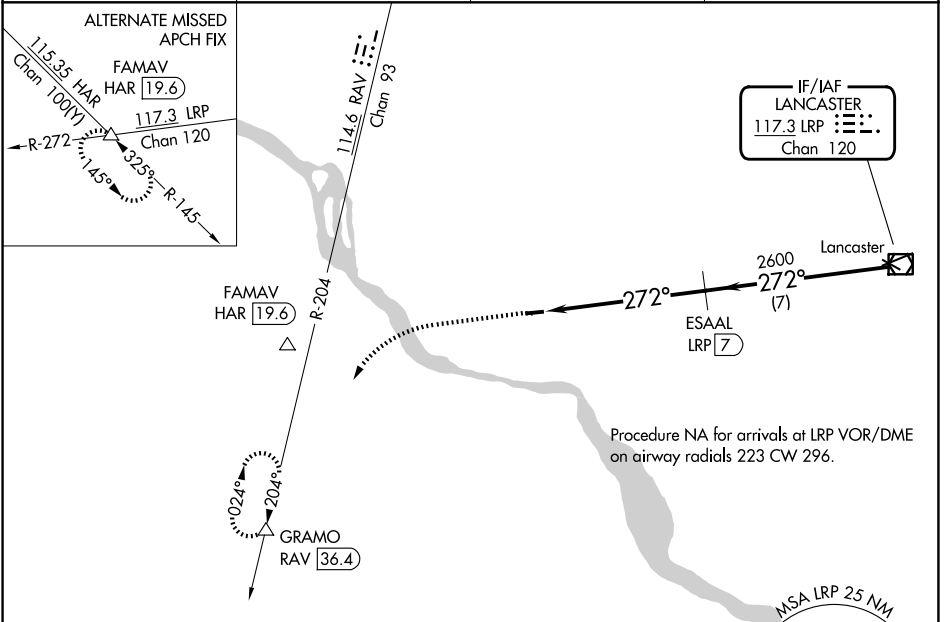
DME required.

▼ Use Harrisburg Intl altimeter setting; when not received, use Fort Indiantown Gap altimeter setting and increase all MDAs 20 feet. Rwy 28 helicopter visibility reduction below 1 SM NA. Procedure NA at night.

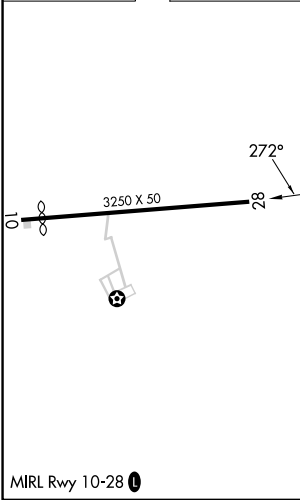
▲ NA

MISSED APPROACH: Climb to 2600 then climbing left turn to 3000 on RAV R-204 to GRAMO/RAV 36.4 DME and hold.

MDT ASOS 118.8	HARRISBURG APP CON 126.45 281.525	HARRISBURG CLNC DEL 127.05	UNICOM 122.8 (CTAF) 0
--------------------------	---	--------------------------------------	---------------------------------



ELEV 458	TDZE 458
----------	----------



2600	3000	GRAMO		
↑	RAV R-204	△		
LRP 12.9	272°	2600		
≤ 3.47°	TCH 45			
5.9 NM	7 NM			
ESAAAL LRP 7	LRP VOR/DME	2600		
CATEGORY	A	B	C	D
S-28	940-1	482 (500-1)	NA	
CIRCLING	940-1	960-1	NA	
	482 (500-1)	502 (600-1)		

NE-4, 14 MAY 2026 to 11 JUN 2026

NE-4, 14 MAY 2026 to 11 JUN 2026