

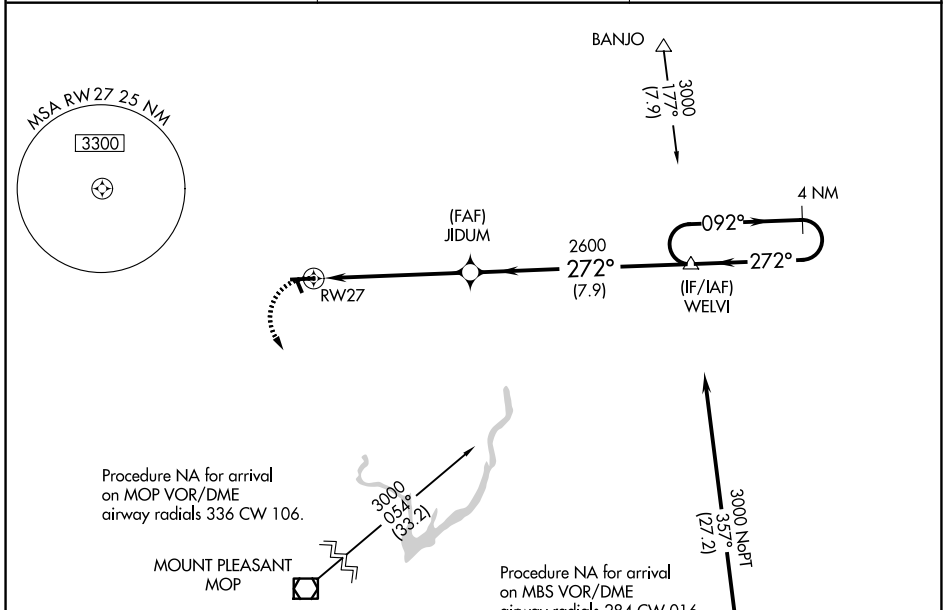
WAAS CH 99326 W27A	APP CRS 272°	Rwy Ldg 4699 TDZE 773 Apt Elev 774
--	------------------------	---

RNAV (GPS) RWY 27

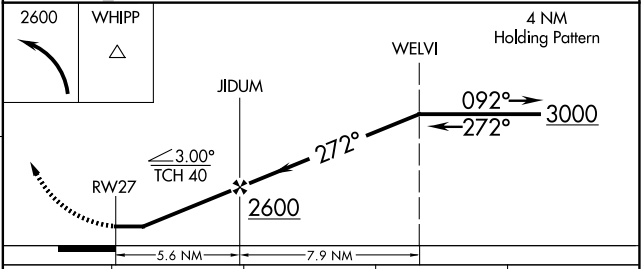
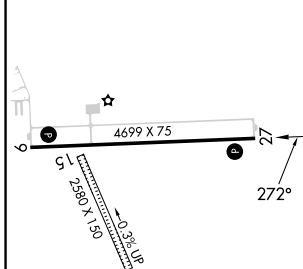
GLADWIN ZETTEL MEML (GDW)

RNP APCH - GPS.	<p>⚠ Circling NA to Rwys 15 and 33. Rwy 27 helicopter visibility reduction below 1 SM NA. Procedure NA at night. Use Mount Pleasant altimeter setting; when not received, use Midland altimeter setting and increase all MDA 20 feet; increase LP and LNAV Cats C/D visibility 1/8 SM.</p>	<p>MISSED APPROACH: Climbing left turn to 2600 direct WHIPP and hold.</p>
-----------------	---	--

AWOS-3PT 118,975	GREAT LAKES APP CON * 126.45 235.625	UNICOM 122.8 (CTAF)
----------------------------	--	-------------------------------



ELEV 774	TDZE 773
-----------------	-----------------



CATEGORY	A	B	C	D
LP MDA	1280-1	507 (600-1)	1280-1 3/8	507 (600-1 3/8)
LNAV MDA	1280-1	507 (600-1)	1280-1 3/8	507 (600-1 3/8)
CIRCLING	1420-1 646 (700-1)	1500-1 726 (800-1)	1520-2 1/4 746 (800-2 1/4)	1700-3 926 (1000-3)

MIRL Rwy 9-27
 REIL Rwys 9 and 27

EC-1, 14 MAY 2026 to 11 JUN 2026

EC-1, 14 MAY 2026 to 11 JUN 2026