

KARRR SEVEN DEPARTURE (RNAV)  
(KARRR7.KARRR) 29DEC22

BAYTOWN, TEXAS  
RWJ AIRPARK (541T)

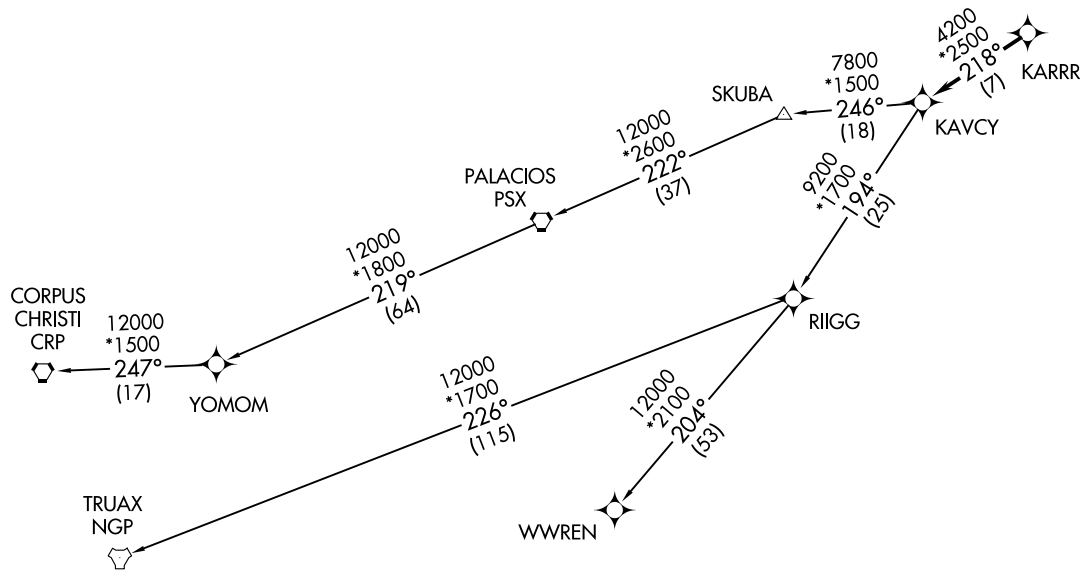
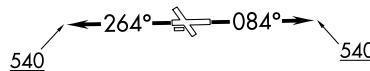
HOUSTON DEP CON  
134.45 284.0  
CTAF  
122.7

RNAV-1 DME/DME/IRU or GPS.  
RADAR required.

TOP ALTITUDE:  
ASSIGNED BY ATC

TAKEOFF MINIMUMS

Rwys 14, 32: NA - Environmental.  
Rwys 8, 26: Standard with minimum climb of 500' per NM to 540.



(CONTINUED ON FOLLOWING PAGE)

NOTE: Chart not to scale.

(KARRR7.KARRR) 26134  
KARRR SEVEN DEPARTURE (RNAV)

AL-6674 (FAA)

BAYTOWN, TEXAS  
RWJ AIRPARK (541T)

# KARRR SEVEN DEPARTURE (RNAV)



## DEPARTURE ROUTE DESCRIPTION

TAKEOFF RUNWAY 8: Climb on heading 084° to 540, for RADAR vectors to KARRR, thence. . . .

TAKEOFF RUNWAY 26: Climb on heading 264° to 540, for RADAR vectors to KARRR, thence. . . .

. . . .on track 218° to KAVCY, then on (transition). Maintain ATC assigned altitude. Expect filed altitude 10 minutes after departure.

CORPUS CHRISTI TRANSITION (KARRR7.CRP)

PALACIOS TRANSITION (KARRR7.PSX)

TRUJAX TRANSITION (KARRR7.NGP)

WWREN TRANSITION (KARRR7.WWREN)

YOMOM TRANSITION (KARRR7.YOMOM)

SC-5, 14 MAY 2026 to 11 JUN 2026

SC-5, 14 MAY 2026 to 11 JUN 2026