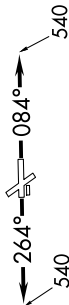


MMALT SEVEN DEPARTURE (RNAV)

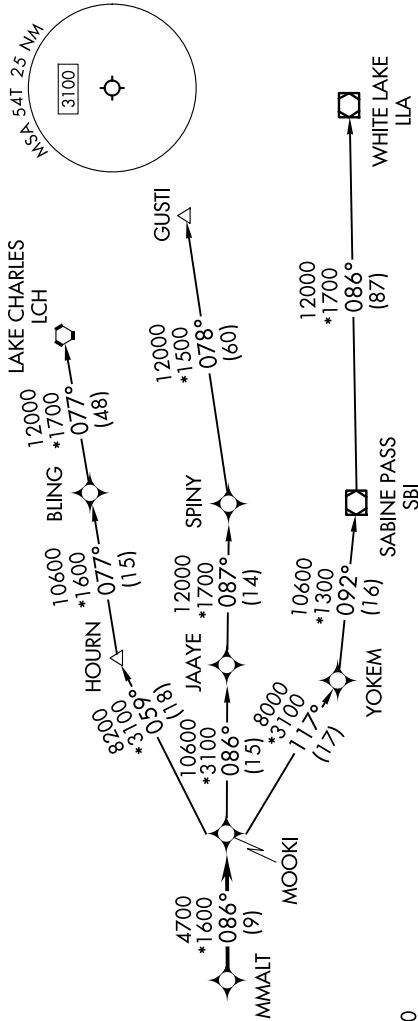
SC-5, 14 MAY 2026 to 11 JUN 2026

RNAV 1 - DME/DME/IRU or GPS.
RADAR required.

HOUSTON DEP CON
134.45 284.0
CTAF
122.7



**TOP ALTITUDE:
ASSIGNED BY ATC**



NOTE: GUSTI and LCH Transitions ATC assigned only for aircraft departing AXH, EFD, GLS, HPY, IWS, LBX, LVJ, SGR, TME, T00, T41 and 54T.

DEPARTURE ROUTE DESCRIPTION

TAKEOFF RUNWAY 8: Climb on heading 084° to 540, for RADAR vectors to MMALT, thence. . .
TAKEOFF RUNWAY 26: Climb on heading 264° to 540, for RADAR vectors to MMALT, thence. . .

. . . on track 086° to MOOKI, then on (transition). Maintain ATC assigned altitude.
Expect filed altitude 10 minutes after departure.

- GUSTI TRANSITION (MMALT7.GUSTI)
- LAKE CHARLES TRANSITION (MMALT7.LCH)
- WHITE LAKE TRANSITION (MMALT7.LLA)

TAKEOFF MINIMUMS
Rwys 14, 32: NA-Environmental.
Rwys 8, 26: Standard with minimum climb of 500'/NM to 540.

NOTE: Chart not to scale.

MMALT SEVEN DEPARTURE (RNAV)

SC-5, 14 MAY 2026 to 11 JUN 2026