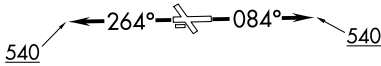


WATFO SIX DEPARTURE (RNAV)

HOUSTON DEP CON
134.45 284.0
CTAF
122.7

RNAV 1 - DME/DME/IRU or GPS.
RADAR required.

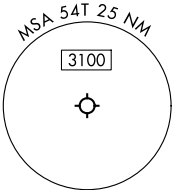
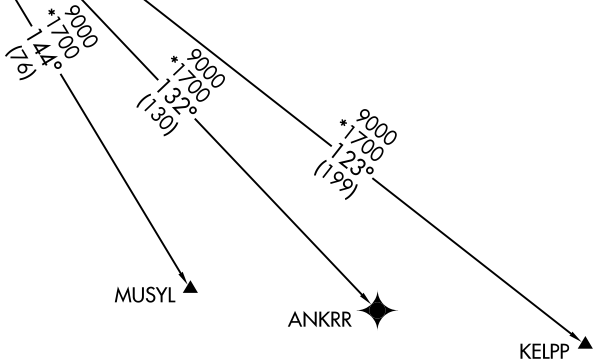
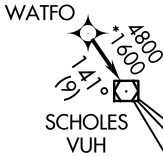
**TOP ALTITUDE:
ASSIGNED BY ATC**



TAKEOFF MINIMUMS:

Rwys 14, 32: NA - Environmental.

Rwys 8, 26: Standard with minimum climb of 500'/NM to 540.



NOTE: Chart not to scale.



DEPARTURE ROUTE DESCRIPTION

TAKEOFF RUNWAY 8: Climb on heading 084° to 540, for RADAR vectors to WATFO, thence. . . .
TAKEOFF RUNWAY 26: Climb on heading 264° to 540, for RADAR vectors to WATFO, thence. . . .

. . . on track 141° to VUH VOR/DME, then on (transition). Maintain ATC assigned altitude.
Expect filed altitude 10 minutes after departure.

- ANKRR TRANSITION (WATFO6.ANKRR)
- KELPP TRANSITION (WATFO6.KELPP)
- MUSYL TRANSITION (WATFO6.MUSYL)

SC-5, 14 MAY 2026 to 11 JUN 2026

SC-5, 14 MAY 2026 to 11 JUN 2026