

WAAS CH 97602 W31A	APP CRS 315°	Rwy Ldg TDZE 74 Apt Elev 76
--	------------------------	---

RNAV (GPS) RWY 31

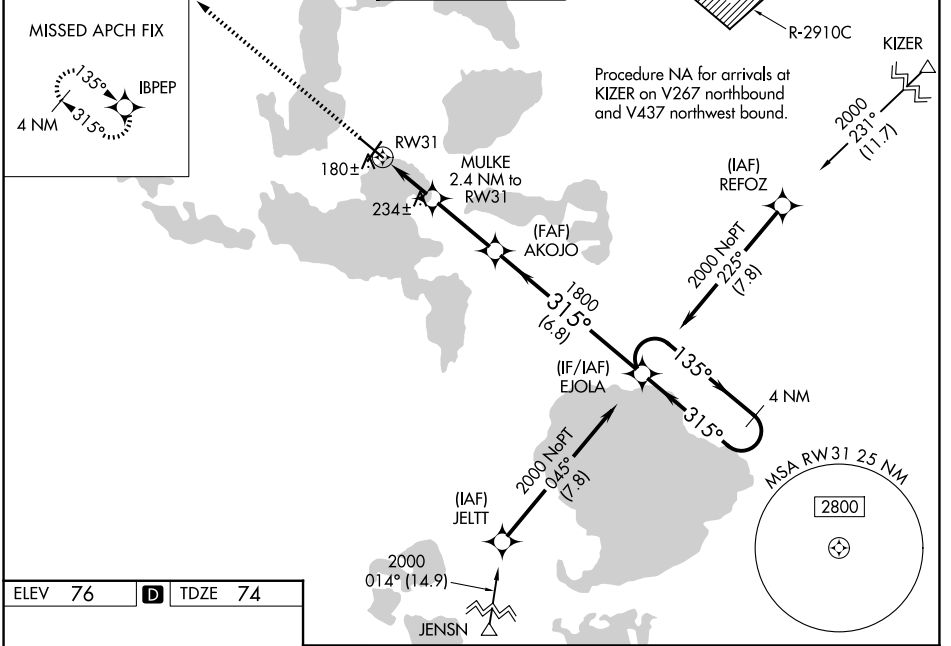
LEESBURG INTL (L.E.E)

RNP APCH-GPS.

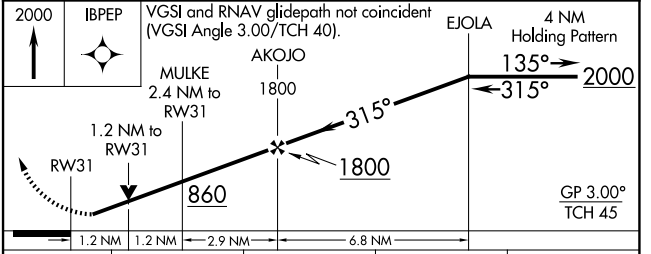
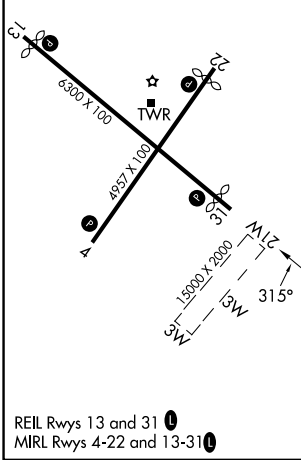
⚠ Baro-VNAV and VDP NA when using Orlando Intl altimeter setting. For uncompensated Baro-VNAV systems, LNAV/VNAV NA below -15°C or above 54°C. When local altimeter setting not received, use Orlando Intl altimeter setting and increase LPV DA to 410 feet. Increase LNAV/VNAV DA to 444 feet. Increase all MDAs 100 feet and LNAV visibility Cat C/D ¼ SM and Circling visibility Cat C/D ¼ SM. Circling Rwy 4, 22 NA at night.

MISSED APPROACH:
Climb to 2000 direct IBPEP and hold.

ATIS 134.325	ORLANDO APP CON 135.3 351.9	LEESBURG TOWER ★ 119.35 (CTAF) 0	GND CON 121.725	UNICOM 122.725
------------------------	---------------------------------------	---	---------------------------	--------------------------



ELEV 76	D	TDZE 74
---------	----------	---------



CATEGORY	A	B	C	D
LPV DA	324-1		250 (300-1)	
LNAV/VNAV DA	358-1		284 (300-1)	
LNAV MDA	500-1	426 (500-1)	500-1¼	426 (500-1¼)
CIRCLING	700-1	624 (700-1)	780-2 704 (800-2)	780-2¼ 704 (800-2¼)

SE-3, 14 MAY 2026 to 11 JUN 2026

SE-3, 14 MAY 2026 to 11 JUN 2026