

SC-3, 14 MAY 2026 to 11 JUN 2026

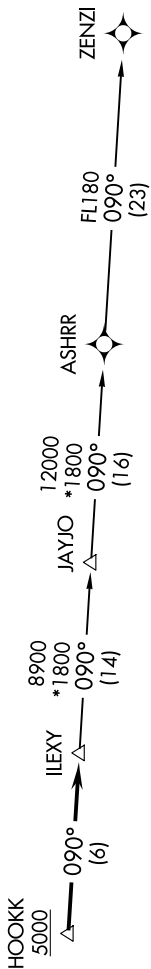
UNICOM (CTAF)  
123.0  
AUSTIN DEP CON  
119.0 370.85

RNAV 1- DME/DME/IRU or GPS.  
RADAR required.

TOP ALTITUDE:  
ASSIGNED BY ATC

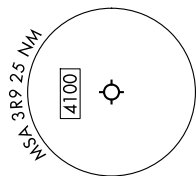
TAKEOFF MINIMUMS:

Rwy 16: 500-2<sup>3</sup>/<sub>4</sub> or Standard with minimum climb of 265' per NM to 1500.  
Rwy 34: Standard.



NOTE: Houston terminal area arrivals expect routing from ILEXY.  
 NOTE: JAYJO transition to join V306 only.  
 NOTE: Takeoff Rwy 16 requires a climb to 1700 on heading 165° prior to turning for obstacle avoidance.  
 NOTE: Aircraft not destined the Houston terminal area or joining V306 must file the ZENZI transition.

NOTE: Chart not to scale.



DEPARTURE ROUTE DESCRIPTION

TAKEOFF RUNWAY 16: Climb on heading 165° to 1700, then as assigned by ATC for vectors to cross HOOKK at or above 5000, thence. . . .

TAKEOFF RUNWAY 34: Climb on heading 345° or as assigned by ATC for vectors to cross HOOKK at or above 5000, thence. . . .  
 . . . on track 090° to ILEXY, then on transition. Maintain altitude assigned by ATC. Expect filed altitude 10 minutes after departure.

JAYJO TRANSITION (ILEXY4.JAYJO)  
 ZENZI TRANSITION (ILEXY4.ZENZI)

SC-3, 14 MAY 2026 to 11 JUN 2026