

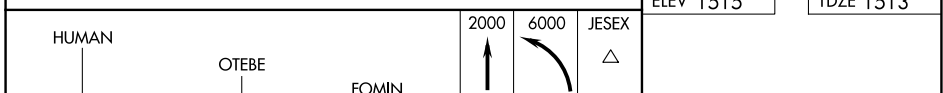
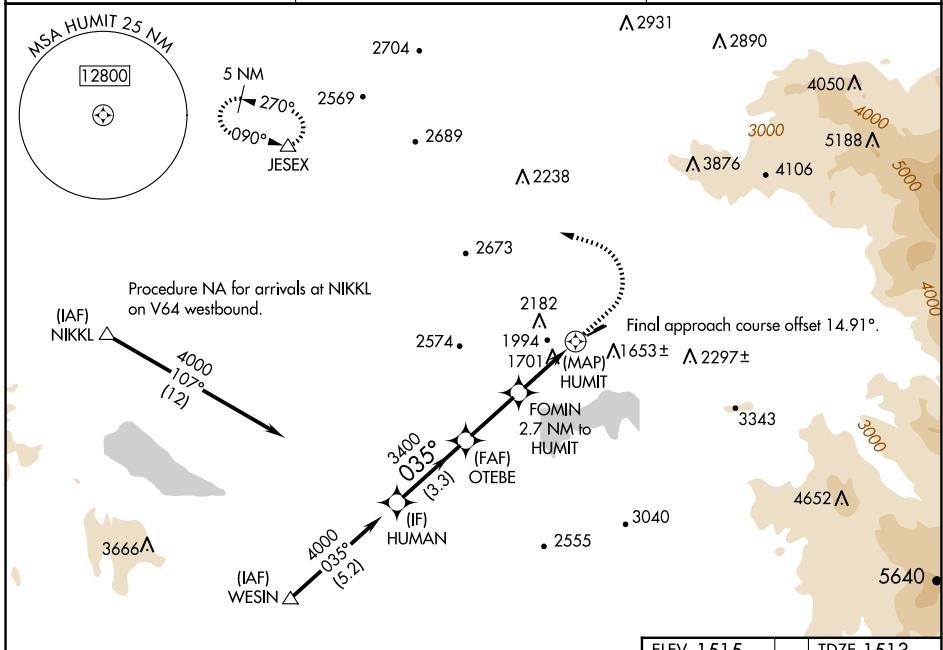
| | | | |
|--|------------------------|-----------------------------|---|
| WAAS CH 45645 W05A | APP CRS 035° | Rwy Ldg TDZE Apt Elev | 4315 1513 1515 |
|--|------------------------|-----------------------------|---|

RNAV (GPS) RWY 5

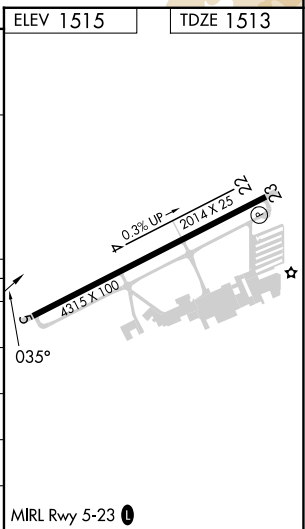
HEMET-RYAN (HMT)

| | |
|--|--|
| RNP APCH - GPS. | MISSED APPROACH: Climb to 2000 then climbing left turn to 6000 direct JESEX and hold, continue climb-in-hold to 6000. *Missed approach requires minimum climb of 400 feet per NM to 3000. |
| ⚠ When local altimeter setting not received, procedure NA. | |

| | | |
|----------------------------|---|-------------------------------|
| AWOS-3PT 118.375 | MARCH APP CON * 133.5 306.975 | UNICOM 123.0 (CTAF) |
|----------------------------|---|-------------------------------|



| CATEGORY | A | B | C | D |
|-----------|--|--|---|----|
| LP MDA* | 1960-1 | 447 (500-1) | 1960-1 $\frac{3}{8}$ 447 (500-1 $\frac{3}{8}$) | NA |
| LP MDA | 2460-1 $\frac{1}{4}$ | 947 (1000-1 $\frac{1}{4}$) | 2460-2 $\frac{1}{2}$ 947 (1000-2 $\frac{1}{2}$) | NA |
| LNAV MDA* | 2160-1 | 647 (700-1) | 2160-1 $\frac{7}{8}$ 647 (700-1 $\frac{7}{8}$) | NA |
| LNAV MDA | 2580-1 $\frac{1}{4}$ 1067 (1100-1 $\frac{1}{4}$) | 2580-1 $\frac{1}{2}$ 1067 (1100-1 $\frac{1}{2}$) | 2580-3 1067 (1100-3) | NA |
| CIRCLING | 2580-1 $\frac{1}{4}$ 1065 (1100-1 $\frac{1}{4}$) | 2580-1 $\frac{1}{2}$ 1065 (1100-1 $\frac{1}{2}$) | 2800-3 1285 (1300-3) | NA |



SW-3, 14 MAY 2026 to 11 JUN 2026

SW-3, 14 MAY 2026 to 11 JUN 2026