

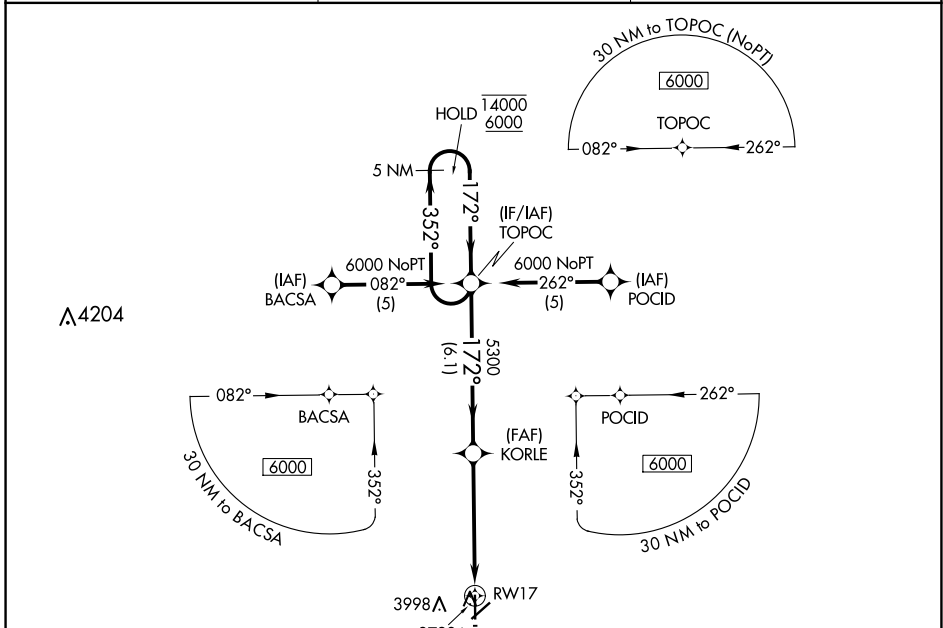
APP CRS 172°	Rwy Idg 4907
	TDZE 3619
	Apt Elev 3622

RNAV (GPS) RWY 17

ELKHART-MORTON COUNTY (EHA)

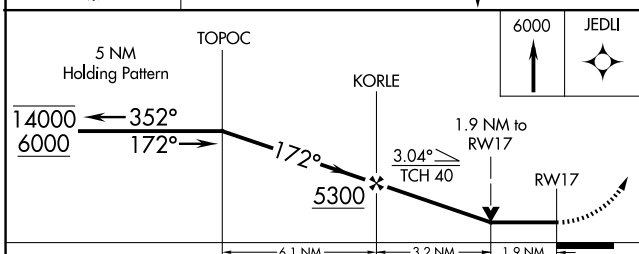
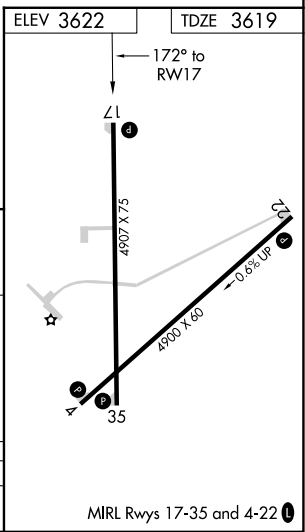
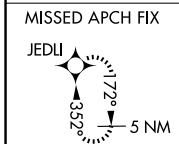
RNP APCH-GPS.	MISSED APPROACH: Climb to 6000 direct JEDLI and hold.
Rwy 17 helicopter visibility reduction below 3/4 SM NA.	

AWOS-3P 118.025	KANSAS CITY CENTER 134.0 257.625	UNICOM 122.8 (CTAF) 0
---------------------------	--	---------------------------------



NC-2, 14 MAY 2026 to 11 JUN 2026

NC-2, 14 MAY 2026 to 11 JUN 2026



CATEGORY	A	B	C	D
LNAV MDA	4240-1	621 (700-1)	4240-1 3/4 621 (700-1 3/4)	NA