

APP CRS	Rwy Idg	4864
172°	TDZE	1364
	Apt Elev	1364

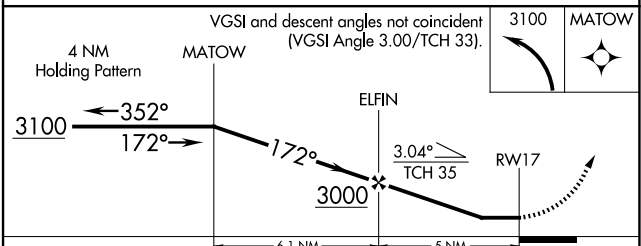
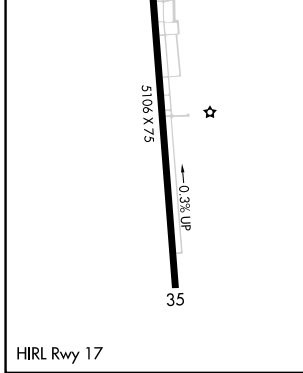
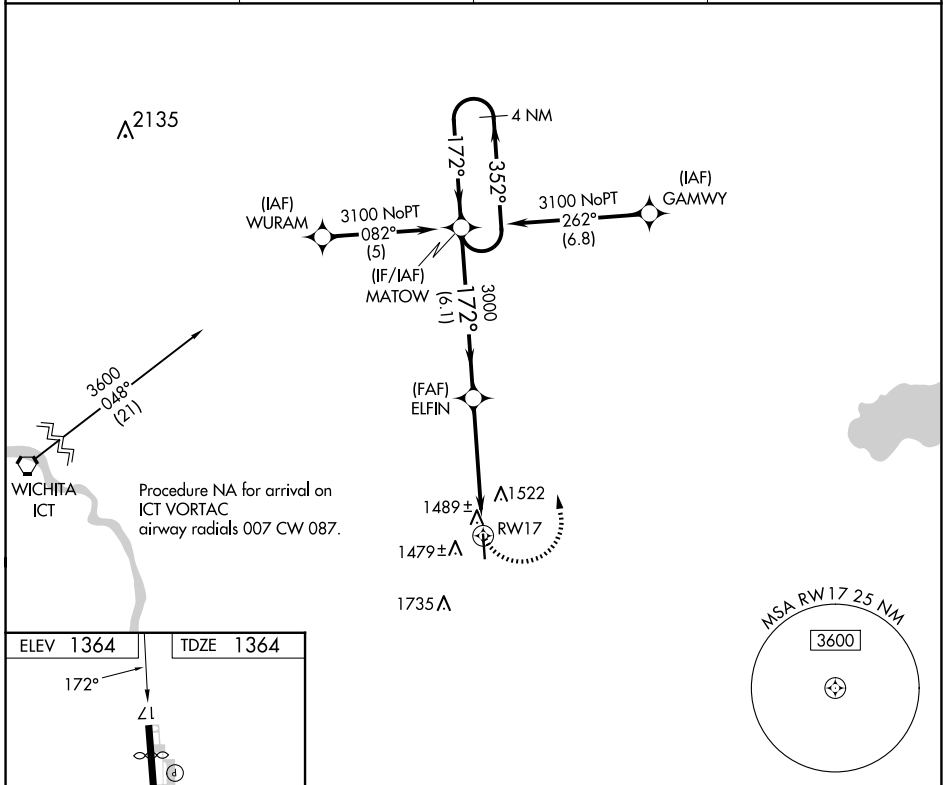
RNAV (GPS) RWY 17

LLOYD STEARMAN FLD (1K1)

⚠ DME/DME RNP-0.3 NA. When local altimeter setting not received, use Wichita Dwight D Eisenhower Nil altimeter setting and increase Circling Cat C MDA 60 feet. Straight-in Rwy 17 NA at night, Circling Rwy 17 NA at night. Rwy 17 helicopter visibility reduction below 1 SM NA.

⚠ NA MISSED APPROACH: Climbing left turn to 3100 direct MATOW and hold.

AWOS-2 118.3	WICHITA APP CON 134.8 269.1	CLNC DEL 125.0	UNICOM 123.075 (CTAF) 0
------------------------	---------------------------------------	--------------------------	-----------------------------------



CATEGORY	A	B	C	D
LNAV MDA	1820-1	456 (500-1)	1820-1 3/8 456 (500-1 3/8)	NA
CIRCLING	1920-1	556 (600-1)	2040-2 676 (700-2)	NA

NC-2, 14 MAY 2026 to 11 JUN 2026

NC-2, 14 MAY 2026 to 11 JUN 2026