

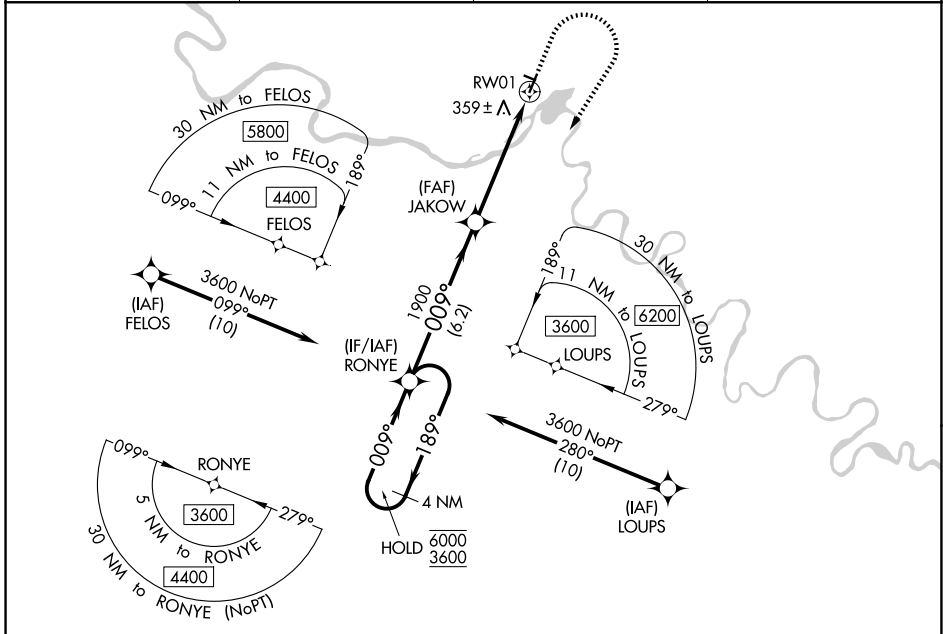
WAAS CH <b>40439</b> <b>W01A</b>	APP CRS <b>009°</b>	Rwy Ldg TDZE Apt Elev	<b>4000</b> <b>268</b> <b>293</b>
--	------------------------	-----------------------------	---

# RNAV (GPS) RWY 1

AMBLER (AFM) (PAFM)

RNP APCH.	MISSED APPROACH: Climb to 1000 then climbing right turn to 3600 direct RONYE and hold, continue climb-in-hold to 3600. # Missed approach requires minimum climb of 210 feet per NM to 2300.
<p>                     Circling NA west of Rwy 1-19. For uncompensated Baro-VNAV systems, LNAV/VNAV NA below -20°C or above 42°C.                      -36°C                 </p>	

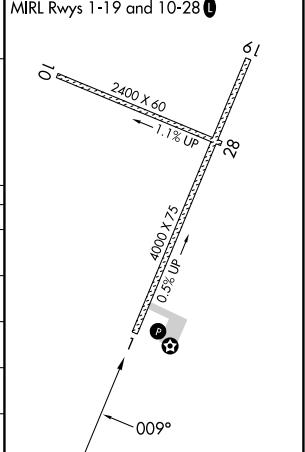
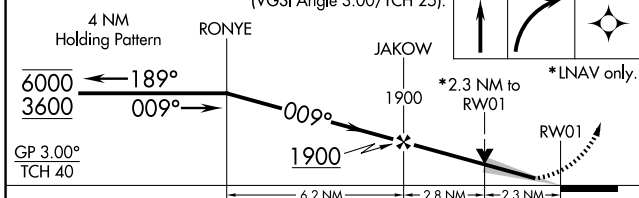
AWOS-3P <b>132.1</b>	ANCHORAGE CENTER <b>119.2 263.0</b>	KOTZEBUE RADIO <b>122.0</b>	CTAF <b>122.7 0</b>
-------------------------	--	--------------------------------	------------------------



AK, 14 MAY 2026 to 09 JUL 2026

AK, 14 MAY 2026 to 09 JUL 2026

VGSI and RNAV glidepath not coincident (VGSI Angle 3.00/TCH 25).	1000	3600	RONYE	ELEV 293	TDZE 268
--	------	------	-------	----------	----------



CATEGORY	A	B	C	D
LPV DA#		518-1	250 (300-1)	
LPV DA		686-1 $\frac{3}{8}$	418 (400-1 $\frac{3}{8}$ )	
LNAV/VNAV DA		811-1 $\frac{7}{8}$	543 (600-1 $\frac{7}{8}$ )	
LNAV MDA	1000-1 732 (800-1)	1000-1 $\frac{1}{4}$ 732 (800-1 $\frac{1}{4}$ )	1000-1 $\frac{7}{8}$ 732 (800-1 $\frac{7}{8}$ )	732 (800-1 $\frac{7}{8}$ )
CIRCLING	1000-1 707 (800-1)	1000-1 $\frac{1}{4}$ 707 (800-1 $\frac{1}{4}$ )	1000-2 707 (800-2)	1000-2 $\frac{1}{4}$ 707 (800-2 $\frac{1}{4}$ )