

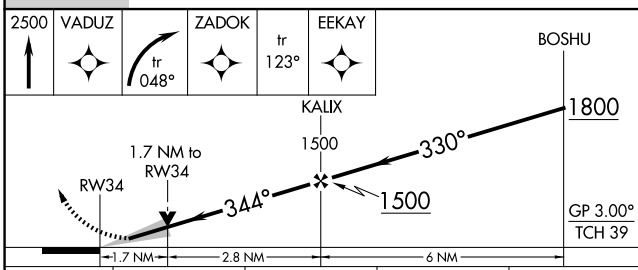
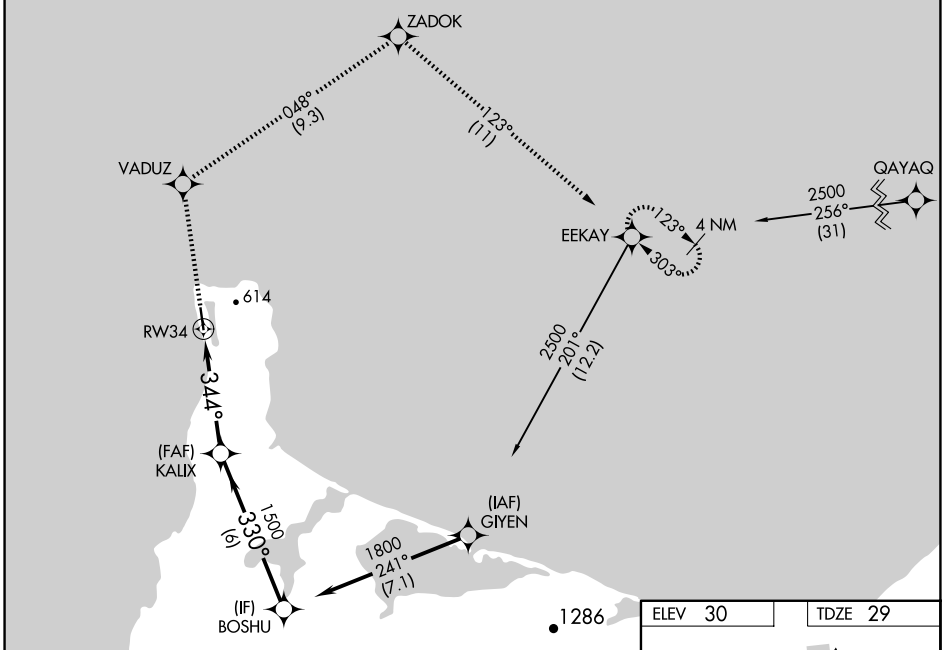
WAAS CH <b>82135</b> <b>W34A</b>	APP CRS <b>344°</b>	Rwy Idg TDZE Apt Elev	<b>4500</b> <b>29</b> <b>30</b>
--	------------------------	-----------------------------	---------------------------------------

# RNAV (GPS) RWY 34

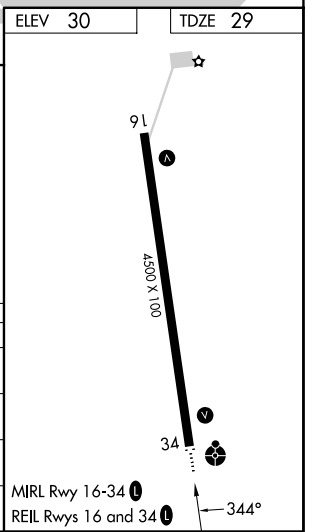
GAMBELL (GAM) (PAGM)

RNP APCH - GPS.	ODALS	MISSED APPROACH: Climb to 2500 direct VADUZ then right turn on track 048° to ZADOK and on track 123° to EEKAY and hold.
<p>▼ Circling NA east of Rwy 16-34. For uncompensated Baro-VNAV systems, LNAV/VNAV NA below -20°C or above 54°C. For inop ALS, increase LNAV/VNAV Cat A and B visibility to 1 1/2 SM. Inop table does not apply to LPV all Cats and LNAV Cats A and B visibilities.</p> <p>⚠ -26°C</p>		

AWOS-3P <b>125.9</b>	ANCHORAGE CENTER <b>132.2 281.4</b>	NOME RADIO <b>122.0</b>	CTAF <b>122.7 0</b>
-------------------------	--	----------------------------	------------------------



CATEGORY	A	B	C	D
LPV DA	229-1		200 (200-1)	
LNAV/VNAV DA	459-1 1/8		430 (500-1 1/8)	
LNAV MDA	600-1 571 (600-1)		600-1 1/2 571 (600-1 1/2)	
CIRCLING	600-1 570 (600-1)		600-1 1/8 570 (600-1 1/8) 660-2 630 (700-2)	



AK, 14 MAY 2026 to 09 JUL 2026

AK, 14 MAY 2026 to 09 JUL 2026