

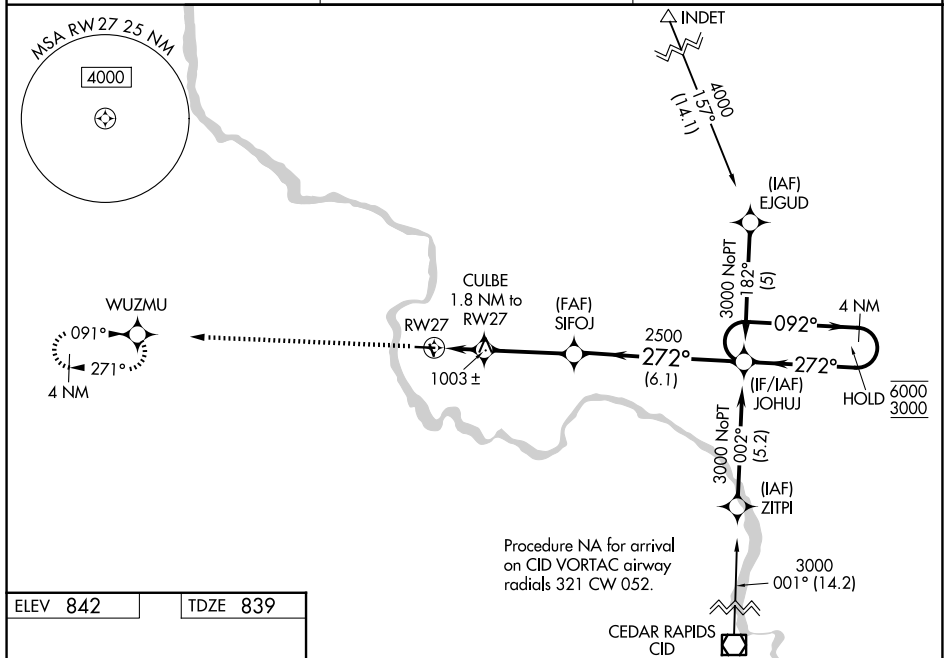
WAAS CH 62917 W27A	APP CRS 272°	Rwy Ldg TDZE Apt Elev	4000 839 842
--	------------------------	-----------------------------	---

RNAV (GPS) RWY 27

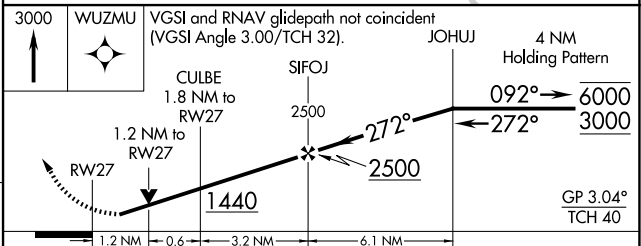
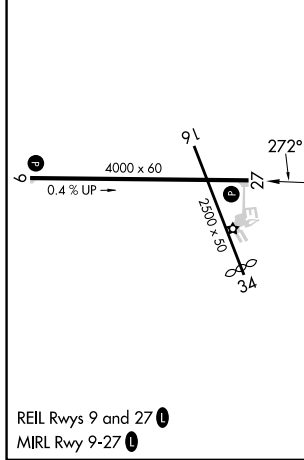
VINTON VETERANS MEML AIRPARK (VTI)

RNP APCH - GPS.	<p>MISSED APPROACH: Climb to 3000 direct WUZMU and hold.</p>
<p>⚠ For uncompensated Baro-VNAV systems, LNAV/VNAV NA below -1.6°C or above 54°C. Rwy 27 helicopter visibility reduction below 3/4 SM NA. Baro-VNAV and VDP NA when using IIB altimeter setting. When local altimeter setting not received, use IIB altimeter setting: increase LPV DA to 1140 feet, LNAV/VNAV DA to 1374 feet and all visibilities 1/2 SM; increase all MDAs 60 feet.</p>	

AWOS-3 120.075	CEDAR RAPIDS APP CON * 134.05 266.8	UNICOM 122.8 (CTAF) 0
--------------------------	---	---------------------------------



ELEV 842	TDZE 839
----------	----------



CATEGORY	A	B	C	D
LPV DA	1089-1	250 (300-1)		NA
LNAV/VNAV DA	1260-1¼	421 (500-1¼)		NA
LNAV MDA	1260-1	421 (500-1)		NA
CIRCLING	1320-1 478 (500-1)	1360-1 518 (600-1)		NA