

RNAV (GPS) RWY 9

VINTON VETERANS MEML AIRPARK (VTI)

APP CRS	Rwy Ldg	4000
091°	TDZE	836
	Apt Elev	842

RNP APCH - GPS.

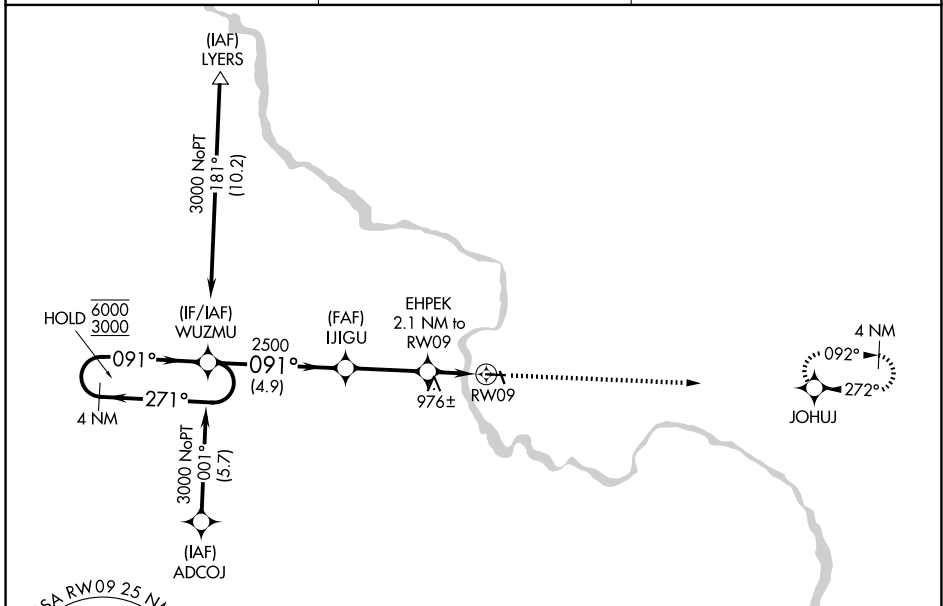
⚠ Rwy 9 helicopter visibility reduction below 3/4 SM NA. VDP NA when using IIB altimeter setting. When local altimeter setting not received, use IIB altimeter setting and increase all MDA 60 feet.

MISSED APPROACH: Climb to 3000 direct JOHUJ and hold.

AWOS-3
120.075

CEDAR RAPIDS APP CON ★
134.05 266.8

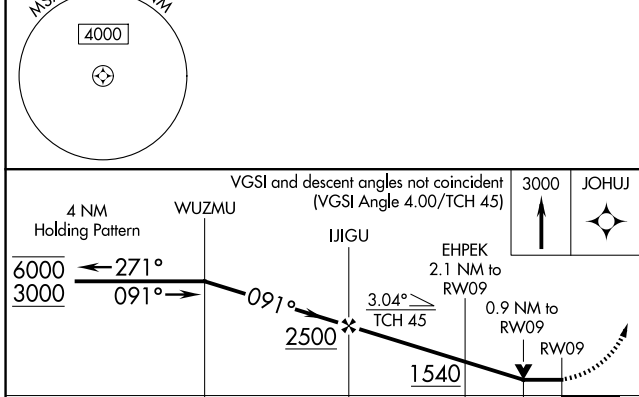
UNICOM
122.8 (CTAF)



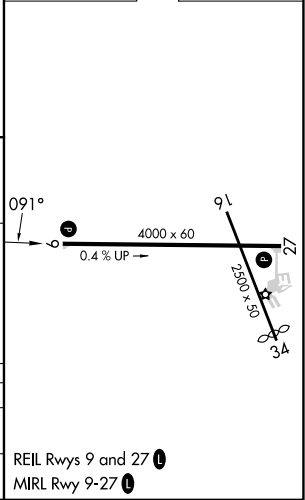
NC-3, 14 MAY 2026 to 11 JUN 2026

NC-3, 14 MAY 2026 to 11 JUN 2026

ELEV 842	TDZE 836
----------	----------



CATEGORY	A	B	C	D
LNVA MDA	1260-1	424 (500-1)	NA	
CIRCLING	1320-1 478 (500-1)	1360-1 518 (600-1)	NA	



REIL Rwy 9 and 27 **①**
MIRL Rwy 9-27 **①**