

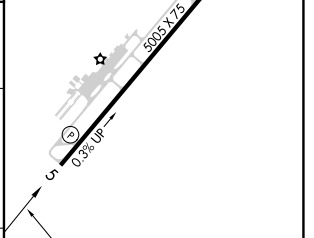
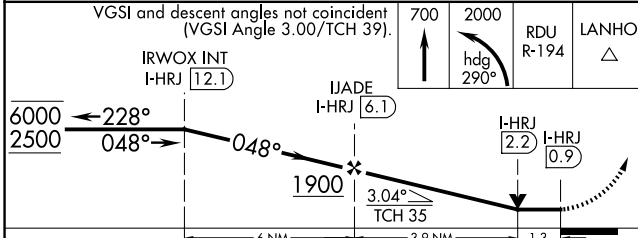
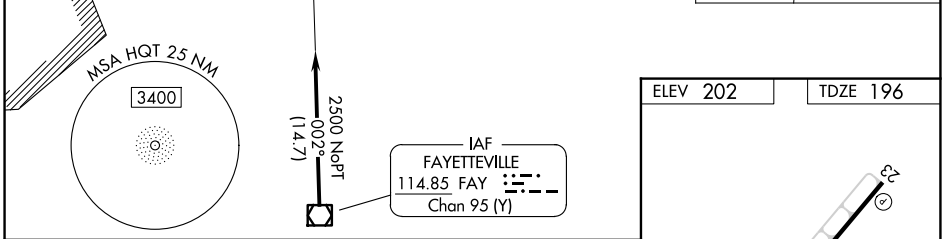
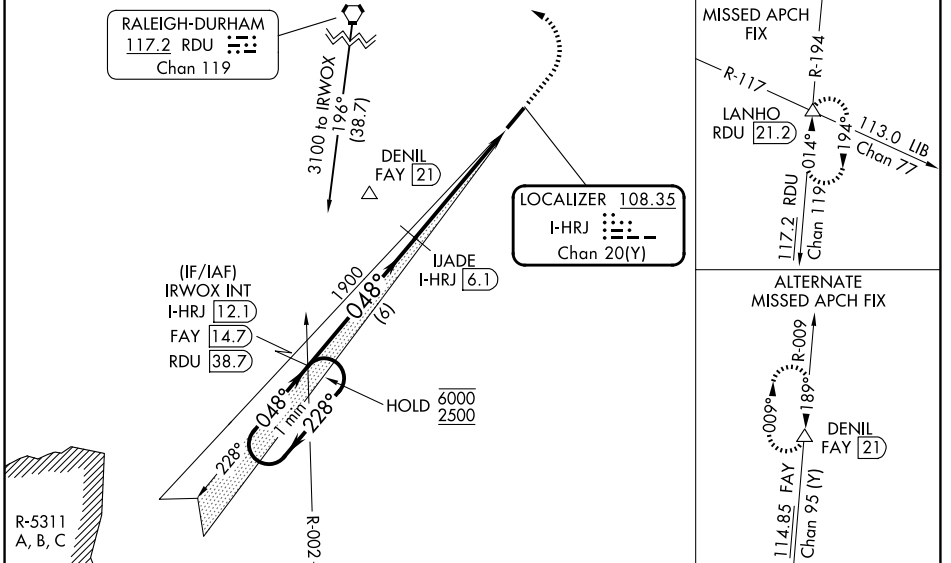
LOC/DME I-HRJ 108.35 Chan 20 (Y)	APP CRS 048°	Rwy Ldg TDZE Apt Elev	5005 196 202
---	------------------------	-----------------------------	---

LOC RWY 5
HARNETT RGNL JETPORT (HRJ)

DME required.

MISSED APPROACH: Climb to 700 then climbing left turn to 2000 on heading 290° and RDU R-194 to LANHO INT/RDU 21.2 DME and hold.

AWOS-3 119.025	FAYETTEVILLE APP CON 125.175 285.575	UNICOM 122.7 (CTAF)
--------------------------	--	-------------------------------



CATEGORY	A	B	C	D
S-5	640-1 444 (500-1)		640-1 1/2 444 (500-1 1/2)	NA
CIRCLING	660-1 458 (500-1)	720-1 518 (600-1)	780-1 1/2 578 (600-1 1/2)	NA

ELEV 202 TDZE 196

REIL Rwy 5 and 23
MIRL Rwy 5-23

SE-2, 14 MAY 2026 to 11 JUN 2026

SE-2, 14 MAY 2026 to 11 JUN 2026