

WAAS CH 53719 W02A	APP CRS 022°	Rwy Ldg TDZE Apt Elev	4400 1068 1068
--	------------------------	-----------------------------	---

RNAV (GPS) RWY 2

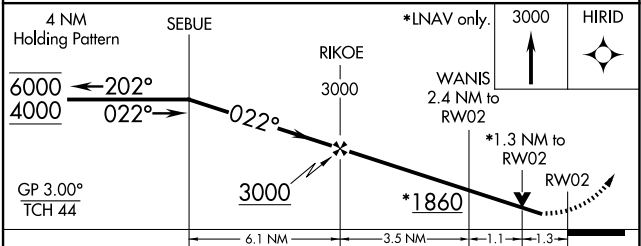
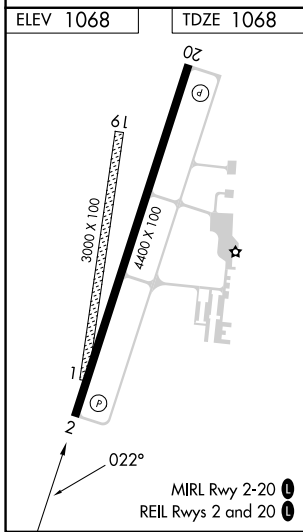
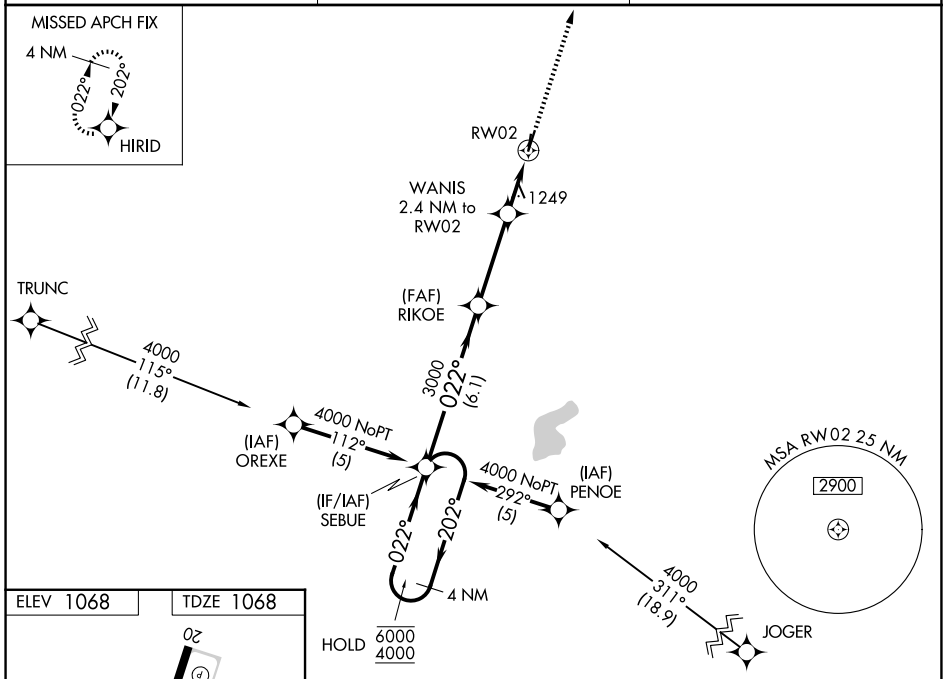
GRIMES FLD (I74)

RNP APCH.

▼ Baro-VNAV and VDP NA when using Springfield altimeter setting. Rwy 2 helicopter visibility reduction below 3/4 SM NA. For uncompensated Baro-VNAV systems, LNAV/VNAV NA below -17°C or above 54°C. When local altimeter setting not received, use Springfield altimeter setting and increase all DAs 44 feet, all MDAs 60 feet, increase LNAV/VNAV all Cats visibility 1/4 SM, and increase Circling Cat C visibility 1/4 SM. Circling NA to Rwy 1 and 19.

▲ MISSED APPROACH: Climb to 3000 direct HIRID and hold.

AWOS-3 118,325	COLUMBUS APP CON 134.45 294.5	UNICOM 122.7 (CTAF) 0
--------------------------	---	---------------------------------



CATEGORY	A	B	C	D
LPV DA	1318-1	250 (300-1)		NA
LNAV/VNAV DA	1501-1 1/2	433 (500-1 1/2)		NA
LNAV MDA	1500-1	432 (500-1)	1500-1/4 432 (500-1/4)	NA
CIRCLING	1580-1 512 (600-1)	1780-1 712 (800-1)	1800-2 732 (800-2)	NA

EC-2, 14 MAY 2026 to 11 JUN 2026

EC-2, 14 MAY 2026 to 11 JUN 2026