

BOBZY SIX DEPARTURE (RNAV)

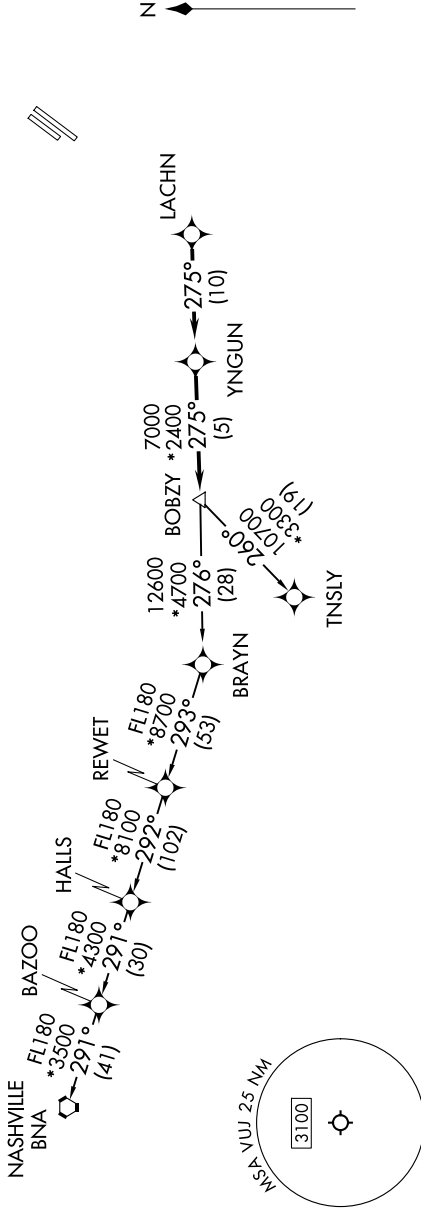
SE-2, 14 MAY 2026 to 11 JUN 2026

CHARLOTTE DEP CON
128.325 307.8
AWOS-3
128.175
CLNC DEL
121.75 254.375
GND CON
121.75 254.375
STANLY COUNTY TOWER ★
126.275 (CTAF) 291.9

RNAV 1 - DME/DME/IRU or GPS.
RADAR required.

TAKEOFF MINIMUMS

Rwys 4L, 22R: NA - Environmental.
Rwy 22L: Standard.
Rwy 4R: 300-1 $\frac{3}{4}$ or standard with minimum climb of 315'/NM to 1000.



TOP ALTITUDE:
3000

DEPARTURE ROUTE DESCRIPTION

▲ Climb on heading assigned by ATC, for RADAR vectors to LACHN, then on depicted route to BOBZY, then on assigned transition. Maintain 3000. Expect filed altitude 10 minutes after departure.

NASHVILLE TRANSITION (BOBZY6 BNA)
TNSLY TRANSITION (BOBZY6 TNSLY)

NOTE: Turbojet only.
NOTE: If unable to accept climb rates, advise ATC on initial contact.
NOTE: Transponder code will be issued via PDC or Charlotte CLNC DEL.
NOTE: Upon reaching 10000 MSL, accelerate to and maintain 280K, if unable advise ATC.

NOTE: Chart not to scale.

SE-2, 14 MAY 2026 to 11 JUN 2026

BOBZY SIX DEPARTURE (RNAV)